

<b>Manufacturer:</b>	Toshiba
<b>Model Number(s):</b>	<b>IK-WB21A</b>
<b>OneHome Versions:</b>	4.0.376 and higher
<b>Comments:</b>	Camera Finder version 3.0.1
<b>Document Revision Date:</b>	8/25/2008

## **OVERVIEW AND SUPPORTED FEATURES**

Installing the Toshiba camera can be broken down into the following steps:

1. Install cameras at desired locations, and pull power and Cat5 cabling as needed. Refer to the Toshiba documentation for mounting details.
2. Connect the cameras electrically to the home network and configure the cameras. See **Camera Configuration**.
3. Integrate the cameras into the **OneHome** system and test proper operation. This step is outlined in **HomeLogic Configuration Details**.

### **THIS TOSHIBA CAMERA SUPPORTS THE FOLLOWING FEATURES:**

**Pan / Tilt:** These cameras can be turned to see various locations.

**Zoom:** The camera can zoomed in/out.

**Presets:** These cameras support presets, allowing the user to store predefined locations such as a driveway or pool.

**Audio In:** The camera includes a microphone jack. Sound that is picked up by the camera is played at the Viewer interface.

**Image Flip:** The camera can be mounted with its base up or down, and the image will appear normal.

### **THIS TOSHIBA CAMERA DOES NOT SUPPORT THE FOLLOWING FEATURES:**

**Audio Out:** The camera includes an audio line-out, but sending audio to the camera is not supported from the Viewer interface at this time.

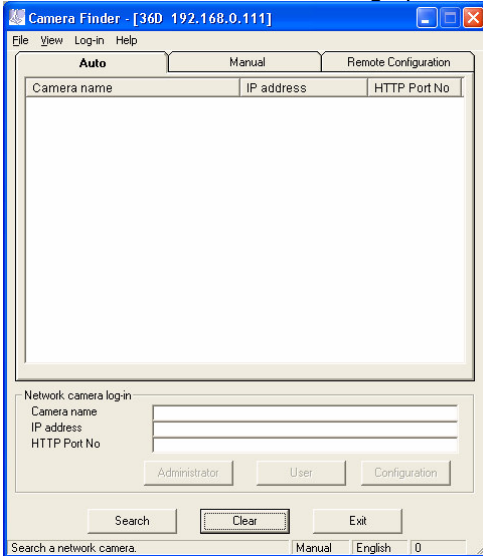
**Input/Output:** The camera includes an I/O connector for sensor inputs and alarm outputs. These are not supported by the OneHome system at this time.

**Motion Detection:** Motion detection is not supported on this camera.

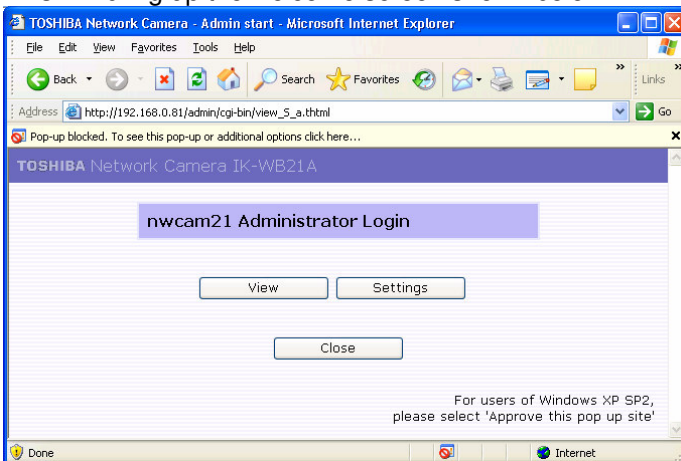
## CAMERA CONFIGURATION

These cameras are configured with the Toshiba Camera Finder tool. Install the software that came with the camera.

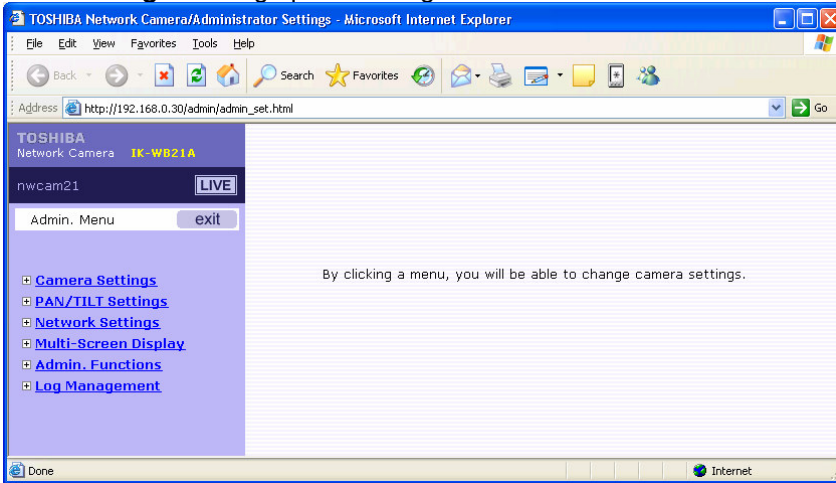
1. Start the Camera Finder to bring up the window shown below:



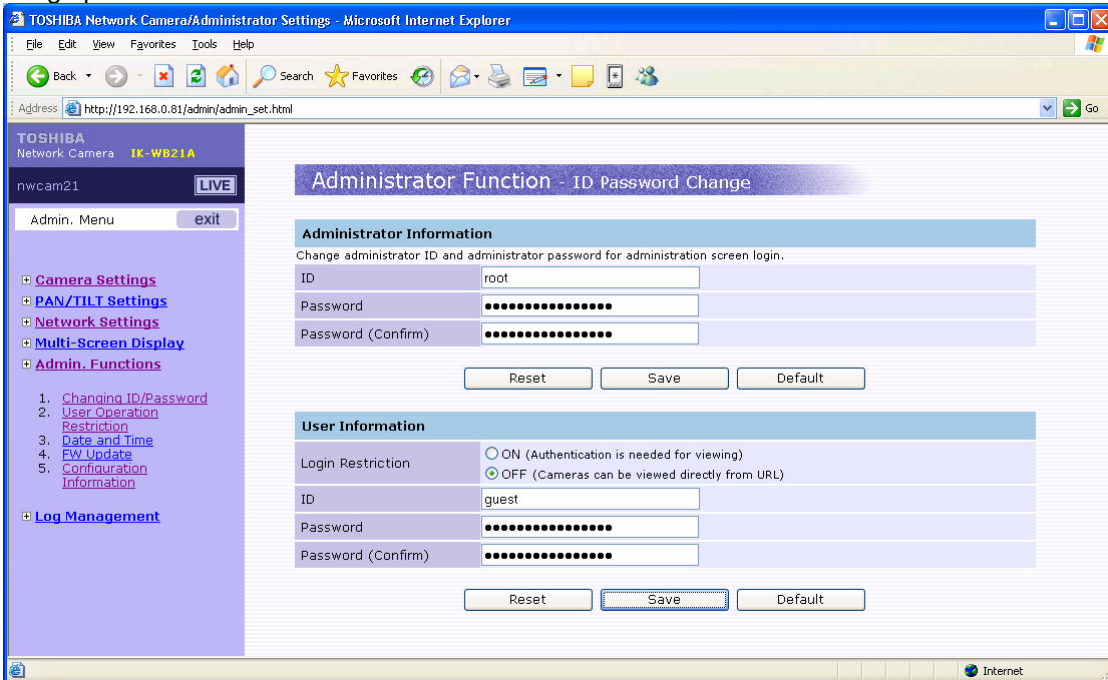
2. Click Search to look for cameras: this will populate the window with any cameras on the network. Select the desired camera, then click **Administrator** to bring up the login dialog for the camera.
3. Enter the user name and password: by default the user name is **root** and the password is **ikwb**. This will bring up the welcome screen shown below:



4. Click **Settings** to bring up the settings screen shown below:

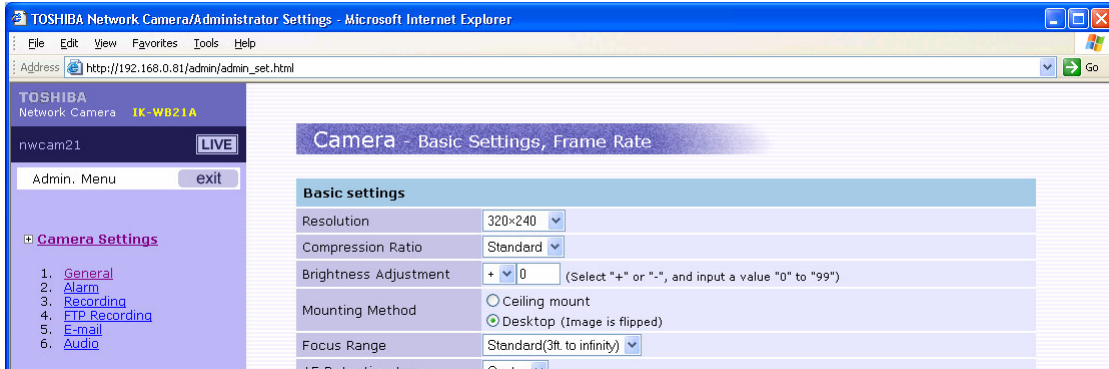


5. Click **Admin Functions** at left to expand the navigation, then click **Changing ID/Password** to bring up the screen below:

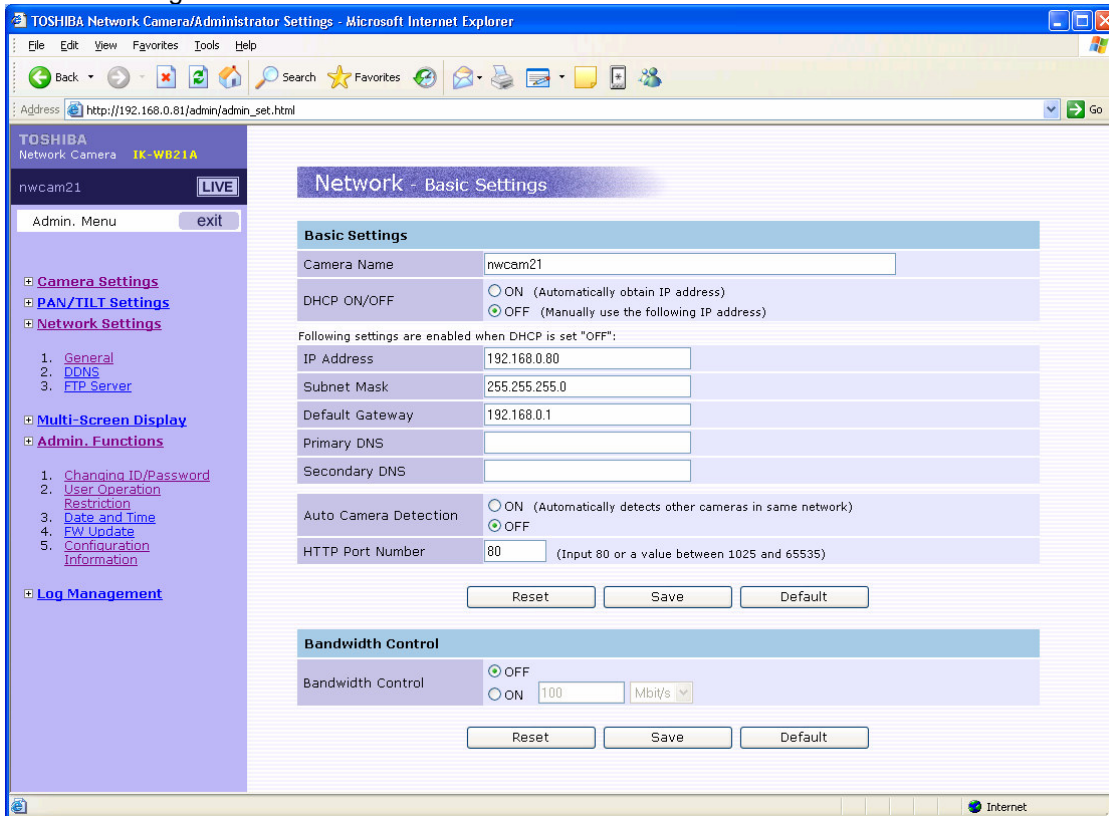


6. Under User Information, set Login Restriction to **OFF** as shown above.
7. Click the **Save** button under User Information to save your changes.

8. If you are going to mount the camera on a “desktop”, you will need to flip the image from the standard “ceiling” mount. If you are going to mount the camera on a ceiling, then skip down to the Network Settings.
9. To flip the image, click **Camera Settings** at left, to bring up the camera setting screen, a portion of which is shown below.



10. Select Desktop, then scroll down and click **Save** to save your changes.
11. Click **Network Settings** at left to expand the navigation, then click **General** to bring up the network settings as shown below:



12. Click to select **DHCP ON/OFF** off, then set the desired IP address for the camera. By default we suggest setting the first camera to 192.168.0.80, the second to 192.168.0.81, and so on.
13. Click **Save** to save your changes.

## HOMELOGIC CONFIGURATION DETAILS

The following table provides settings used in the HomeLogic Configurator. Please refer to the Configurator Reference Guide for more details.

In the table below:

- “<User Defined>”, etc. Type in the desired name for the item.

Devices	Variable Name	Setting	Comments
Communication Device	N/A (See Note 1)	N/A (See Note 1)	
Video Cameras	Name	<User Defined> (Default: <b>Toshiba IK-WB21A</b> )	
	Device Type	<b>Toshiba IK-WB21A</b>	
	Location	<User Defined> (Not Required)	
	IP Address	<User Defined> (Default: <b>192.168.0.80</b> ) (See Note 2)	
	Port	<b>80</b>	
	Login Name	<User Defined> (Default: <b>root</b> )	
	Password	<User Defined> (Default: <b>ikwb</b> )	

**Notes:**

1. No **Communication Device** is needed: just add **Video Cameras**.
2. By default, set the first camera to 192.168.0.80, the second to 192.168.0.81, and so on.