

Manufacturer:	Panasonic
Model Number(s):	BL-C10A, BL-C30A (wireless)
OneHome Versions:	3.0 (all builds), 4.0 (all builds)
Comments:	Network Camera (EasyConfig.exe version 1.0.2)
Document Revision Date:	5/19/2011

**NOTE: This document refers to Camera setup in software versions below 5.2 ONLY.
Please see the Rev 5.2 Integration Note for systems running 5.2 or greater.**

OVERVIEW AND SUPPORTED FEATURES

Installing the Panasonic camera can be broken down into the following steps:

1. Install cameras at desired locations, and pull power and Cat5 cabling as needed. Refer to the Panasonic documentation for mounting details.
2. Connect the cameras electrically to the home network and configure the cameras. See **Camera Configuration**.
3. Integrate the cameras into the **OneHome** system and test proper operation. This step is outlined in **HomeLogic Configuration Details**.

THE BL-C10A AND BL-C30A SUPPORT THE FOLLOWING FEATURES:

Pan / Tilt: The camera can be turned to see various locations.

Presets: These cameras support presets, allowing the user to store predefined locations such as a driveway or pool. This feature requires **OneHome** software version 4.0 or later.

THE BL-C10A AND BL-C30A DO NOT SUPPORT THE FOLLOWING FEATURES:

Zoom: Cameras lacking optical zoom cannot be zoomed in HomeLogic.

CAMERA CONFIGURATION

The camera configuration is done with software provided by Panasonic, which must be run from a computer with Windows also connected to the same network as the camera.

The software program from Panasonic is **EasyConfig.exe**: the version we checked is shown at the top.

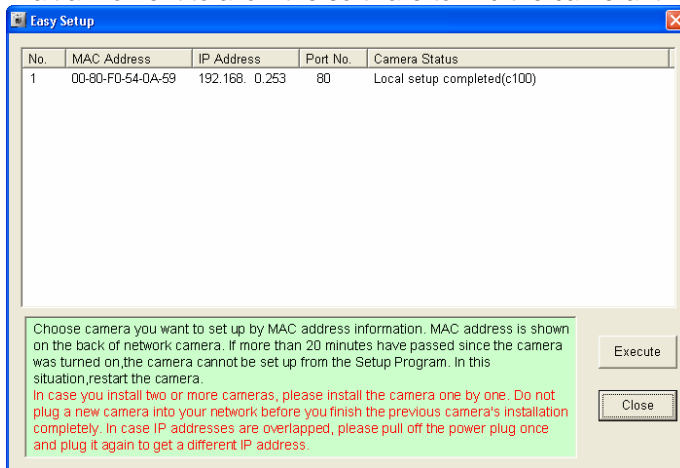
IMPORTANT NOTES

1. **Cameras must be configured one at a time:** If you are installing more than one camera, setup the first one completely before powering up subsequent cameras.
2. **Setup the camera within 20 minutes:** Initial settings must be made within 20 minutes of the camera being turned on. If the camera has been powered up for more than 20 minutes, cycle power to the camera before proceeding.

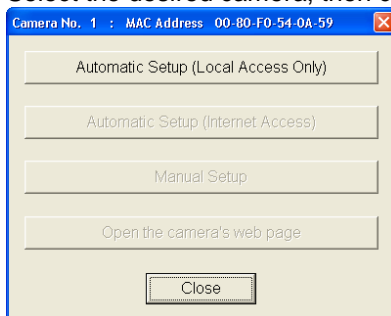
3. **DON'T LOSE THE CAMERA PASSWORD:** During setup you will create a user name and password, which are required to make any other changes in the future. If you lose the user name or password you will have to factory reset the camera and repeat this entire procedure.
4. **DEFAULT USER NAME / PASSWORD:** For Panasonic cameras, our default user name is **Administrator** and our default password is **password**.

STARTING THE PANASONIC CAMERA SOFTWARE

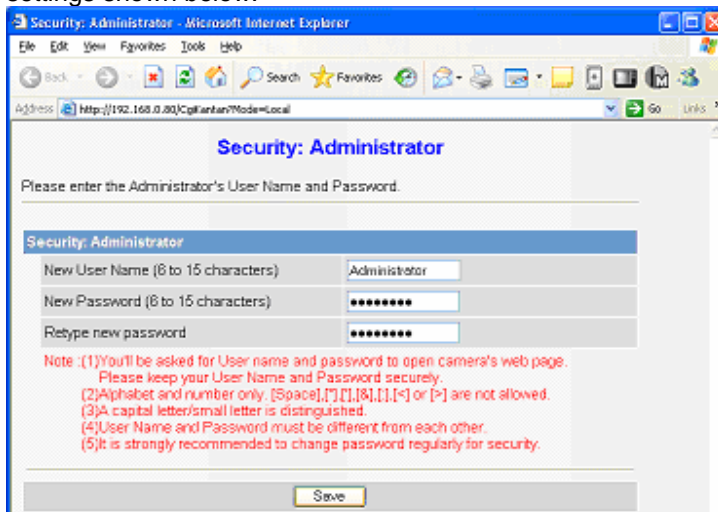
1. Insert the CD from the camera into your PC: once it starts up, click **Camera Setup**. Or, if you have copied the files from the CD to your computer, locate and start **EasyConfig.exe**.
2. Wait a moment to allow the software to find the camera: the following screen appears.



3. Select the desired camera, then click **Execute** to bring up the camera dialog shown below:



4. Click **Automatic Setup**: after a short delay you will see a new browser window with the password settings shown below:



5. Type in your desired user name and password: these values are not needed by the **OneHome** system, but must be recorded and saved to make settings to the camera. By default we set the user name to **Administrator** and the password to **password**.

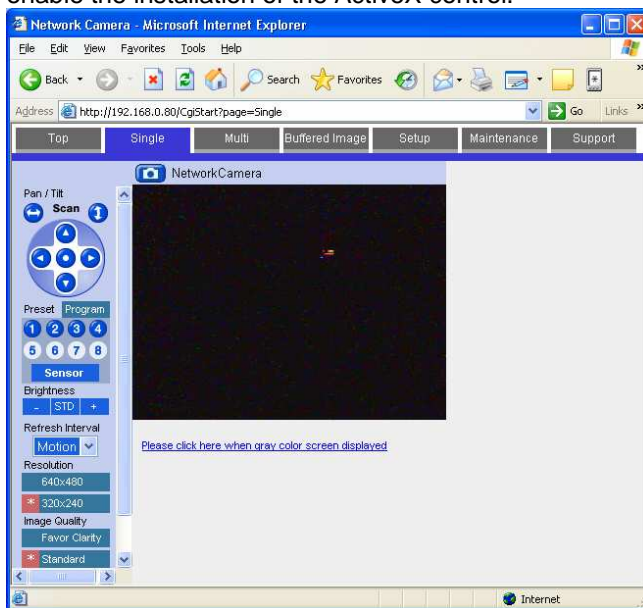
6. You will be prompted to enter your user name and password again, as shown in the image below. Type in the user name and password you just set, and click **OK**.



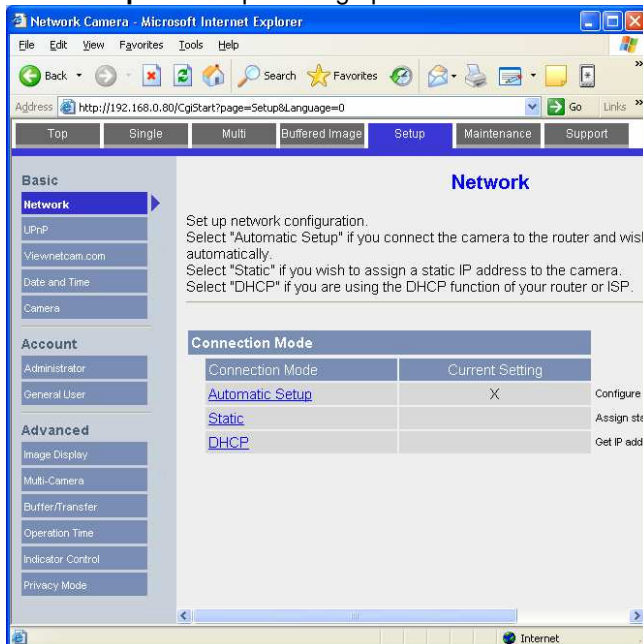
7. After a short delay, you should see a new browser window, similar to that shown under Camera Settings below.
8. If the **Automatic Setup** dialog is still present, click its **Cancel** button. If the **Easy Setup** window is still open on your desktop, close that window now as well.

CAMERA SETTINGS

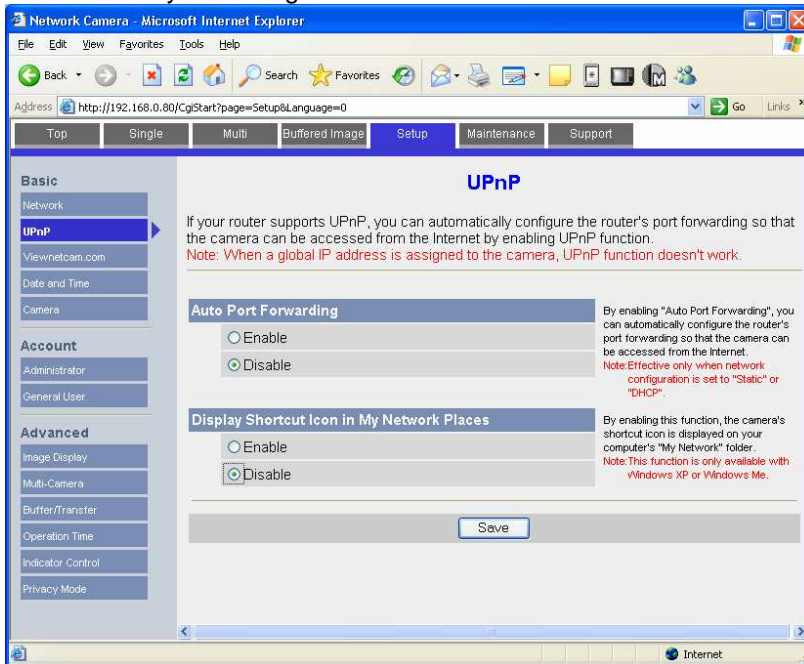
1. After typing in your user name and password, you will be shown the standard browser interface to the camera.
2. The system will attempt to install an ActiveX control to show the camera image in the browser window. This control is not needed for proper **OneHome** operation, but is needed if you wish to see the camera image on that computer. If any dialogs appear, close them or accept the ActiveX control as appropriate for your situation.
3. On Windows computers with popup blocking enabled, you will need to click the appropriate bar to enable the installation of the ActiveX control.



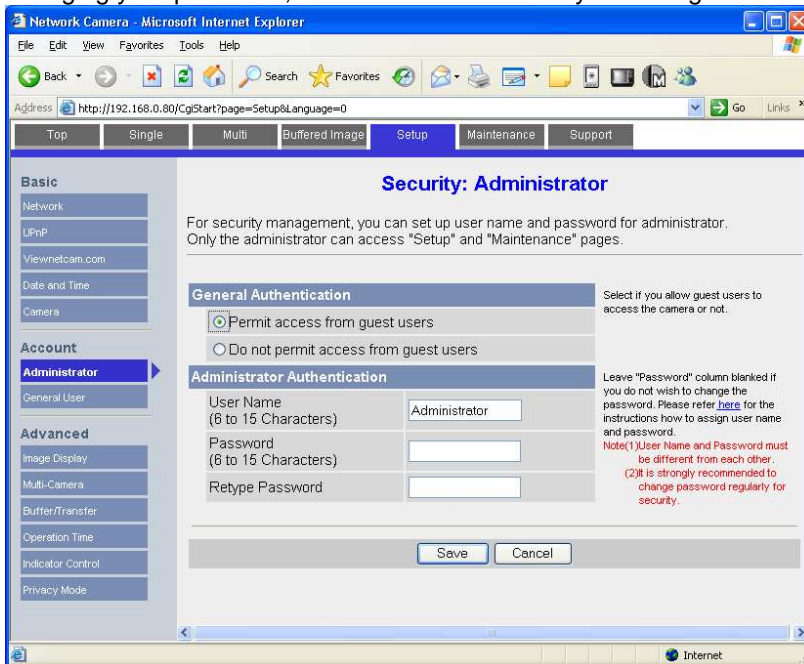
4. Click **Setup** at the top to bring up the screen shown below:



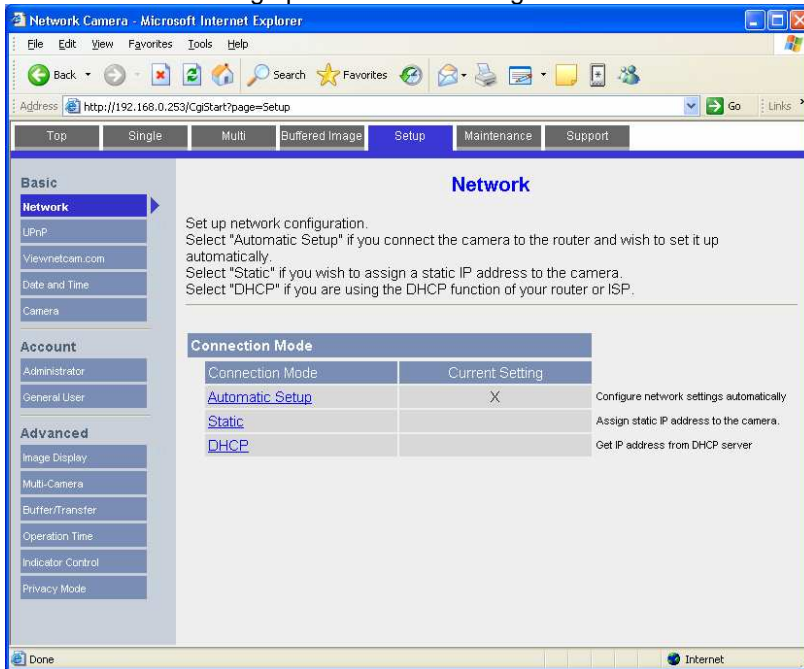
5. Click **UPnP** on the left, then click **Disable** in the both parts of the screen, as shown below. Click **Save** to store your settings.



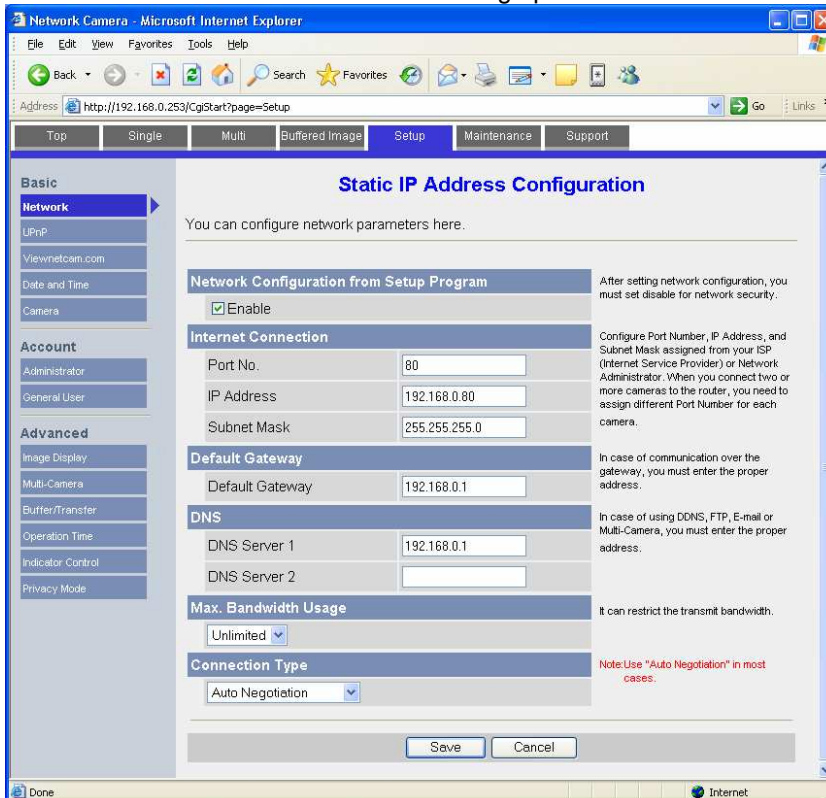
6. Under Accounts to the left, click **Administrator** to bring up the screen below. Click **Permit access from guest users**, as shown below. Leave the **Password** boxes blank to prevent changing your password, then click **Save** to store your changes.



- Click **Network** to bring up the network settings screen shown below.



- Click **Static** in the Connection Mode to bring up the screen below.



- Set the IP address to the desired value: we suggest setting the first camera to 192.168.0.80, the second to 192.168.0.81, and so forth. Check the other settings so they match the screen above, then click **Save** to save the settings.

10. If prompted, click to **Restart** to restart the camera. Note that the camera is now at a different IP address, so the browser window won't show the camera.
11. Go to the address line in the browser, and put in the new IP address as shown below:



12. This brings up the camera's home page shown below:



13. The camera is now at the correct IP address with the correct settings.
14. Close the browser.

HOMELOGIC CONFIGURATION DETAILS

The following table provides settings used in the HomeLogic Configurator. Please refer to the Configurator Reference Guide for more details. In the table below:

- o “<User Defined>”, etc. Type in the desired name for the item.

ONEHOME SOFTWARE VERSION 3.0

Devices	Variable Name	Setting	Comments
Communication Device	N/A (See Note 1)	N/A (See Note 1)	
Video Cameras	Name	<User Defined> (Default: Panasonic KX/BL/BB Series)	
	Device Type	Panasonic KX/BL/BB Series	
	Location	<User Defined> (Not Required)	
	IP Address	<User Defined> (Default: 192.168.0.80) (See Note 2)	

Notes:

1. No **Communication Device** is needed: just add **Video Cameras**.
2. By default, set the first camera to 192.168.0.80, the second to 192.168.0.81, and so on.

ONEHOME SOFTWARE VERSION 4.0

Devices	Variable Name	Setting	Comments
Communication Device	N/A (See Note 1)	N/A (See Note 1)	
Video Cameras	Name	<User Defined> (Default: Panasonic BL-C10A,30A/KX-HCM-10,230,250,270)	
	Device Type	Panasonic BL-C10A,C30A/KX-HCM10,230,250,270	
	Location	<User Defined> (Not Required)	
	IP Address	<User Defined> (Default: 192.168.0.80) (See Note 2)	

Notes:

1. No **Communication Device** is needed: just add **Video Cameras**.
2. By default, set the first camera to 192.168.0.80, the second to 192.168.0.81, and so on.