



Integration Note

Manufacturer:	ADA
Model Number(s):	Suite 8200
Core Module Version:	
Comments:	Programming Software: Suite 8200D Tester, version 16D_8 Firmware: Audio Module v2.0
Document Revision Date:	1/10/2013

OVERVIEW AND SUPPORTED FEATURES

The Suite 8200 is a modular 8 X 8 Audio switcher that uses an RS-232 connection through the ADA ISO-CAT II or ISO-232 isolation box to communicate with **g!**. This serial connection to the **g!** system provides full two-way communications, enabling reliable control as well as providing feedback to the **g!** system when changes (such as the current source or volume levels) occur at the switcher.

The Suite 8200 chassis can hold two tuner modules. These chassis can be daisy chained together to expand the number of zone outputs.

THESE SWITCHERS SUPPORT THE FOLLOWING FEATURES:

Basic Source Selection: Select any available audio source with two-way feedback. Any changes made at the switcher are immediately reflected in the **g!** interface. See limitations below.

Volume Control: On Suite 8200 systems the volume can be controlled from the **g!** interface.

Sound Control: Adjust the tone (bass and treble) from the **g!** interface. Also turn on or off the Loudness or Stereo enhancement filters on a zone by zone basis. In addition buttons can be setup to store and recall tone presets. See Suite 8200 Documentation for more details.

All Off: A single all off command can be added to the interface to allow simpler system-wide shutdown.

THESE SWITCHERS DO NOT SUPPORT THE FOLLOWING FEATURES:

Paging: The serial Paging trigger has not been integrated with **g!**.

Any feature not specifically noted as supported should be assumed to be unsupported.
--

INSTALLATION OVERVIEW

1. During the rough-in phase install the necessary speaker cabling for the system installation.
2. Also during the rough-in phase, run a Cat5 wire from the location of the Suite 8200 and isolation box back to the Network Assembly of the **g!** system to provide the serial connection needed to control the switcher. Refer to the **RS-232 Connection Options** Integration Note for other serial connection options.
3. Install the speakers, displays, and other distributed audio components.
4. Program the Suite 8200 according to the manufacturer's documentation: see **ADA Programming** below.
5. Test the system to ensure that the sources play correctly and that the audio operates as expected.
6. Connect the **g!** system to the Suite 8200 electrically. See the connection diagram for more information.
7. Add and configure the appropriate ADA Tuners in the **g!** system.
8. Configure the **g!** system for the Suite 8200 and confirm communication between it and the **g!** system controller.
9. Test the system by changing sources and volume to confirm the correct source plays.

ADA PROGRAMMING

The ADA must be programmed according to normal ADA instructions, with the following additional requirements:

CHECK SWITCH SETTINGS ON ISOLATION BOX

The isolation box has switches which must be set as follows:

1. Set switches 1, 2 and 3 Down
2. Switch 4 Up.

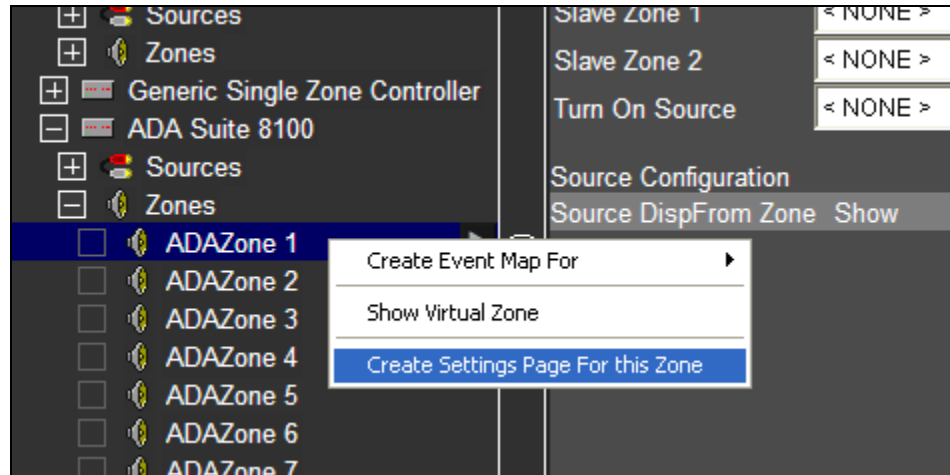
PROGRAM THE SUITE 8200

The Suite 8200 is programmed using the ADA Suite 8200D Tester software. Module firmware can be checked using this tool, from the “Configuration Tab” click **Global Version Request**. Confirm the module versions match those listed in the header of this document.

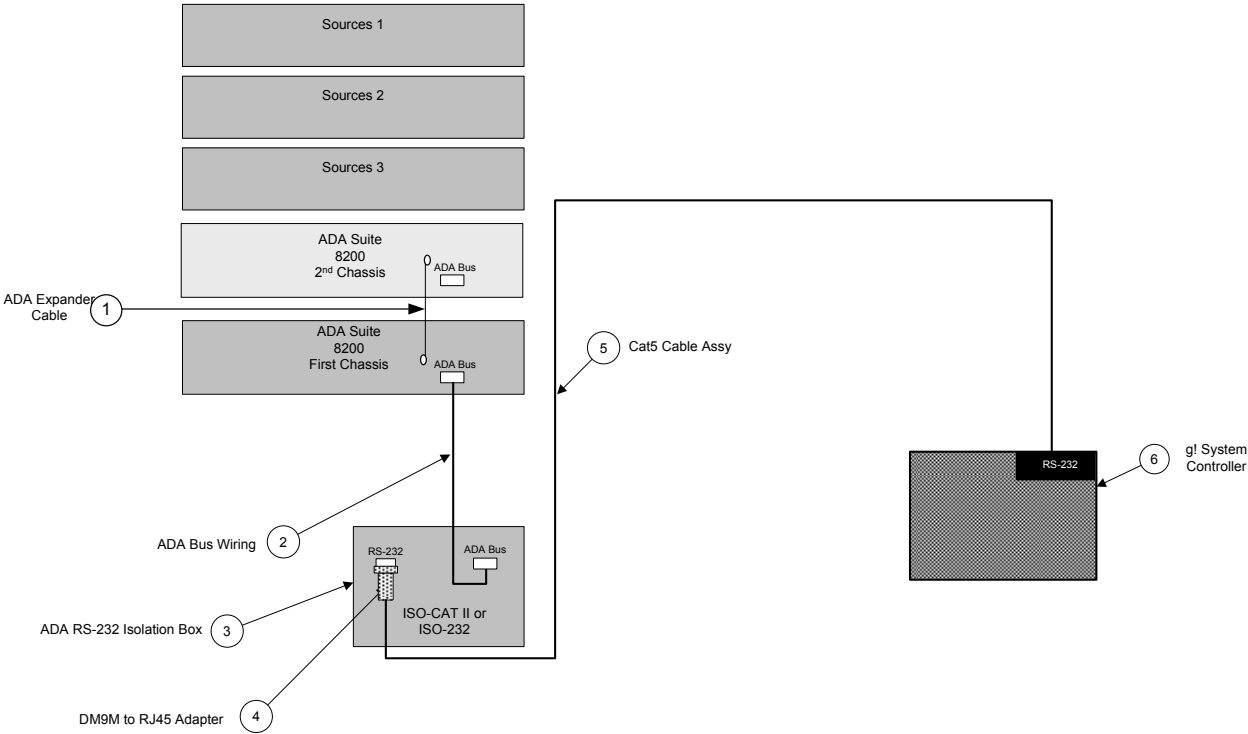
There is no specific programming settings required to control a Suite 8200 system. Follow ADA documentation to properly set up the system prior to connecting to g!, as these settings may include audio trim levels, turn on volume, maximum volume levels, etc.

ADA ADVANCED CONTROL FEATURES (OPTIONAL)

The Suite 8200 supports the adjustment of some sound qualities on a zone by zone basis, which are enabled in **g!** by right-clicking on a zone and creating a zone settings interface.



CONNECTION DIAGRAMS



BILL OF MATERIALS

#	Device	Manufacturer	Part Number	Protocol	Connector Type	Notes
1	ADA Expander Cable	ADA		ADA Bus	3.5 Mini/3.5 Mini	Required to link multiple Suite 8200 chassis
2	ADA Bus Wiring	Installer	N/A	ADA Bus	Screw x Screw	3C 16awg Shielded cable (alt. 4C 16AWG speaker cable) 15' Max wire run length
3	ADA RS-232 Isolation Box	ADA	ISO-CAT II or ISO-232	ADA Bus x RS-232	Screw x DB9 Female	
4	RJ45 x DB9 male adapter	ELAN	HW-CB-307	RS-232	RJ-45 Female X DB-9 Male	
5	Cat5 Cable Assy	Installer	N/A	RS-232	RJ-45 Male x RJ-45 Male	
6	g! Controller	ELAN	Various (e.g. HC 12)	RS-232 & Ethernet	RJ-45/DB9/ USB	

g! CONFIGURATION DETAILS

The following table provides settings used in the **g!** Configurator. Please refer to the *g! Configurator Reference Guide* for more details.

- “<Select>” Select the appropriate item from the list (or drop-down) in the Configurator.
- “<User Defined>”, etc. Type in the desired name for the item.

Devices	Variable Name	Setting	Comments
Communication Devices	Name	<User Defined> (Default: ADA Suite 8200)	
	Type	Serial Port	Refer to the RS-232 Connection Option Integration note for alternative configurations
	Communication Type	ADA Bus	Select the Communication Type that matches your system
	Location	<User Defined> (Not Required)	
	COM Port	<Select>	
<Tuner>	Add each ADA tuner present in the Suite 8200 chassis		
Audio Zone Controllers	Name	<User Defined>(Default: ADA Suite 8200)	Defaults to the make and model of your system after selecting Device Type
	Device Type	<Select>	Select your model of controller
	Location	<User Defined> (Not Required)	
	COM Device	<Select> (Default: New Device)	
Sources	Name	<User Defined>	
	Source Device	<Select>	Sources must be previously configured in order to allow selection.
	Source Icon	<Select>	This icon appears on the source button in the Viewer Interface
	Display Name	<User Defined>	This text appears on the source button in the Viewer Interface
Zones	Name	<User Defined>	
	Display	<Select>	Select the Video Display in this zone
	Universal Receiver	<Select>	Refer to the <i>g! Training Guide</i> for more details
	<Source>		
	Display On/Off	<Select>	For each source, select what the display should do when that source is active
	Display Source	<Select>	If using more than one input on the video display select the input for each source.
	Show Source	<Select>	Set to No for any inputs on the system that are not used or do not want to be seen in the zone

COMMON MISTAKES

1. Incorrect settings on the ISO-CAT or ISO-232 interface module. Check to see that the button configuration is correct on the module. Refer to section **ADA Programming** for information.
2. Incorrect setup of the tuner modules. Make sure that the tuner module and address are set up correctly in the **Configurator**.
3. Incorrect connection of the Tuner modules- An RCA-type connection is required from the tuner outputs to an input on the ADA Suite 8200. By default, the system expects that tuner #1 is plugged into Input #1, and tuner #2 into Input #2.