



Integration Note

Manufacturer:	SnapAV
Model Number(s):	WPS-300-NVR
Core Module Version:	6.4 Build 200
Comments:	Firmware Version N0627-SA1.0.12_930
Document Revision Date:	08/06/2013

OVERVIEW AND SUPPORTED FEATURES

The SnapAV Wirepath NVR is a network-enabled Video Recorder that supports the connection up to 16 IP Cameras. The NVR Connects to the g! Controller via Ethernet to provide communications, enabling control from the g! system.

THE FOLLOWING FEATURES ARE SUPPORTED:

Basic Control: The SnapAV Wirepath NVR OSD is controllable via g! Keypads and the SnapAV OSD with a built in one-way IP driver and interface. This interface is assignable as a source on any zone controller on the Media tab.

THE FOLLOWING FEATURES ARE NOT SUPPORTED:

Live or Recorded Video: Video output from the NVR is not available in the g! Viewer.

Any feature not specifically noted as supported should be assumed to be unsupported.
--

INSTALLATION OVERVIEW

Installing the SnapAV NVR can be broken down into the following steps:

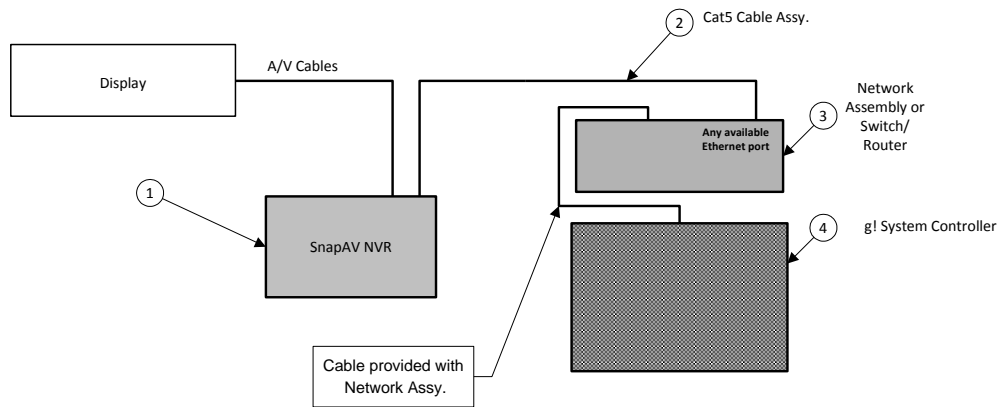
1. During the rough-in phase install the necessary power, A/V, and network cabling for the SnapAV Wirepath NVR and Cameras
2. Also during the rough-in phase, run a Cat5 wire from the location of the NVR back to the Router to provide the Ethernet connection needed to control the NVR.
3. Install the NVR and Cameras.
4. Test the NVR and Cameras independently of the g! system to ensure proper operation of the NVR and Cameras.
5. Configure the g! system for the NVR. This step is outlined in g! Configuration Details.
6. Test the system.

WPS-300-NVR CONFIGURATION

In addition to normal SnapAV Wirepath setup procedures, it is required to set the WPS-300-NVR devices to static IP addresses for reliable communications. To set a NVR to a static IP address, use the remote or attached mouse to navigate the on screen interface:

1. Press the Menu Button on the Remote.
2. Navigate to Network.
3. Select IP Address Setup
4. Set IP Mode to STATIC IP
5. Select IP ADDRESS and enter an available static IP address. Typically the first IP Video device is set to 192.168.0.80, the second to 192.168.0.81, and so on.
6. Select SUBNET MASK and set to 255.255.255.000
7. Set the DEFAULT GATEWAY and DNS SERVER (PRIMARY) to the router IP address. By default, 192.168.0.001.
8. Press SAVE to get back to the HOME screen.

CONNECTION DIAGRAM



BILL OF MATERIALS

#	Device	Manufacturer	Part Number	Protocol	Connector Type	Notes
1	SnapAV NVR	SnapAV	WPS-300-NVR	Ethernet		
2	Cat 5 Cable Assy	Installer	N/A	Ethernet	RJ-45 Male X RJ-45 Male	
3	Switch/Router	Various	Various	Ethernet	RJ-45	
4	g! System Controller	ELAN	Various (e.g. HC-12)	Ethernet	RJ-45	

g! CONFIGURATION DETAILS

The following table provides settings used in the g! Configurator. Please refer to the *g! Configurator Reference Guide* for more details.

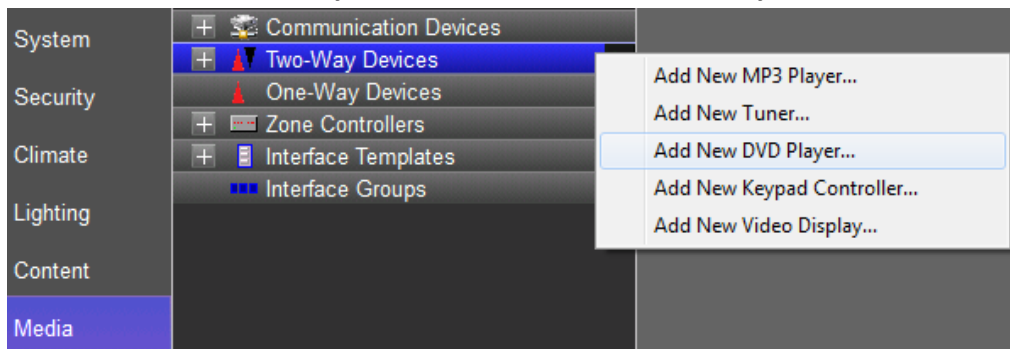
- “<User Defined>”, etc. Type in the desired name for the item.
- “<Auto Detect >”, etc. The system will auto detect this variable.

Devices	Variable Name	Setting	Comments
Media Tab			
Two-Way Device > DVD Player	Name	<User Defined>	
	Device Type	SnapAV WPS-300-NVR	
	User Name	<User Defined>	
	Password	<User Defined>	
	IP Address	<User Defined>	
	Port	<User Defined>	
One Way Interface	Interface Name	<User Defined>	
	Layout Template	SnapAV	
	Connect to Existing	<Select from List> SnapAV WPS-300-NVR	Two-Way Device Described above

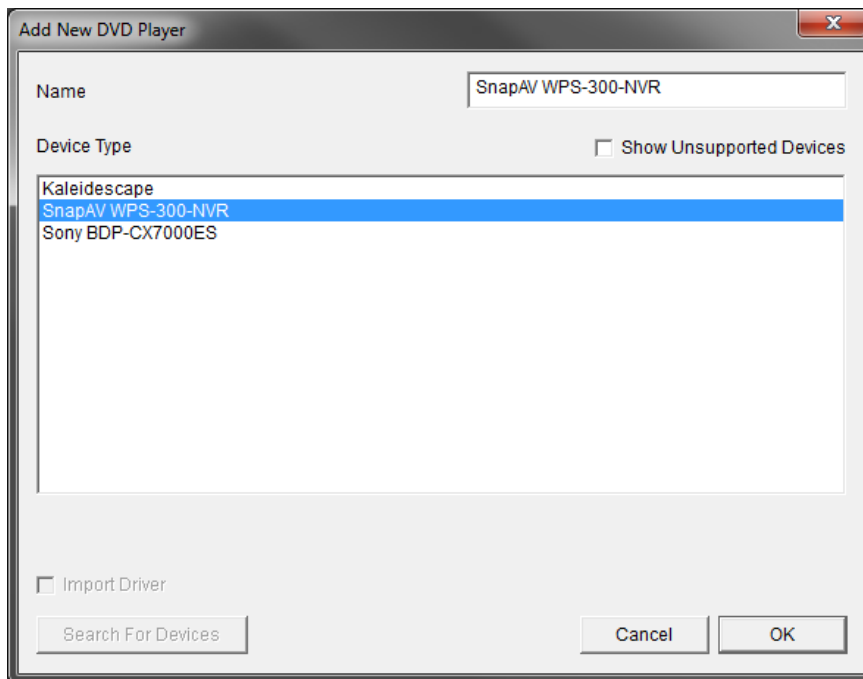
g! CONFIGURATION STEPS

CREATE NVR INSTANCE

1. Under **Media** tab/ **Two-Way Devices**, Select **Add New DVD Player**.



2. From the dialog box, choose the **SnapAV WPS-300-NVR** driver and click **OK**.

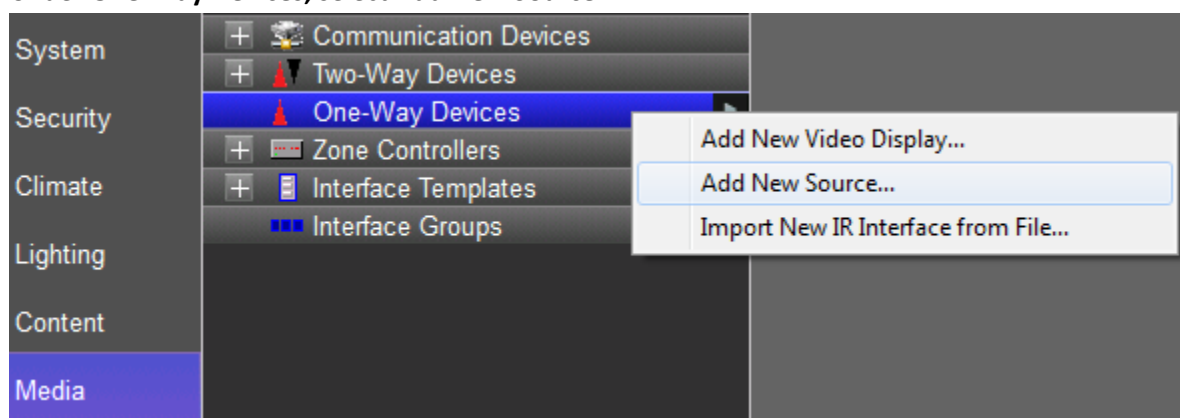


3. The **DVD Player** configuration pane, enter the correct IP, User and Password for the NVR.

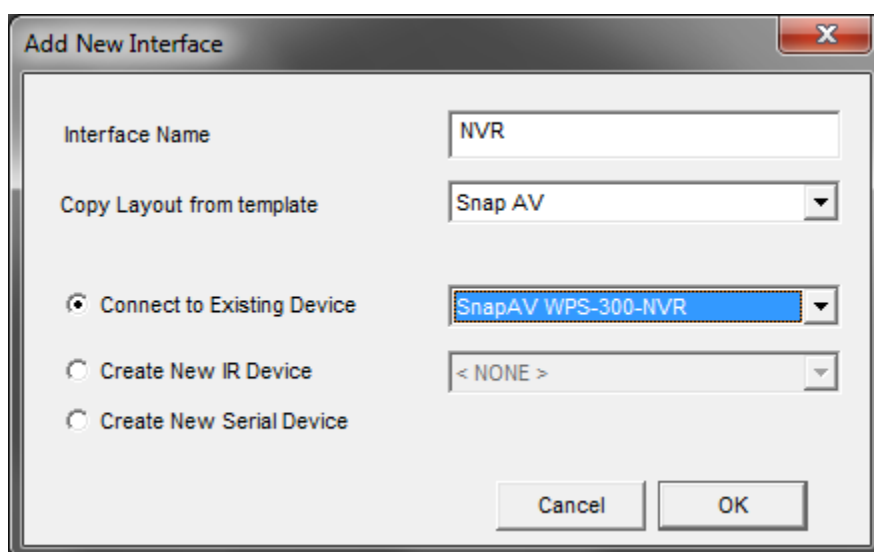


CREATE ONE-WAY DRIVER INTERFACE

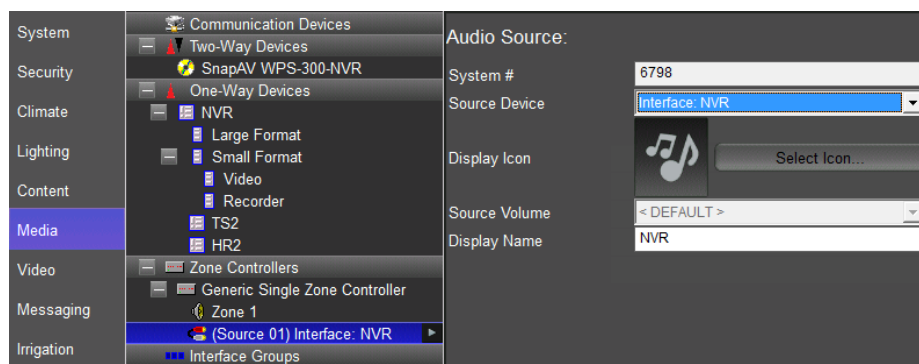
1. Under **One-Way Devices**, select **Add New Source**.



2. Select the **Snap AV** template and connect to **SnapAV WPS-300-NVR** added in previous steps.



3. Finally, add the source to the desired zone controller input as normal and arrange the appropriate selections to manage your Display source to select the SnapAV NVR monitor out for one-way control from the g! Viewer.



COMMON MISTAKES

1. Setting incorrect Device ID. The Device ID in the Configurator must match the ID set in the changer's setup menu.
2. If no One-Way Interface commands are functional, authentication may have timed out on the SnapAV DVR. Use the Menu button and navigate to Login/Logout Menu, and select Login. UserID and Password should populate from g! credentials.