

Manufacturer:	Panasonic
Model Number(s):	BL-C111A, BL-C131A (wireless)
Comments:	Network Camera (version 3.10)
Document Revision Date:	5/19/2011

NOTE: This document refers to Camera setup in software versions below 5.2 ONLY.

Please see the Rev 5.2 Integration Note for systems running 5.2 or greater.

OVERVIEW AND SUPPORTED FEATURES

Installing the Panasonic camera can be broken down into the following steps:

1. Install cameras at desired locations, and pull power and Cat5 cabling as needed. Refer to the Panasonic documentation for mounting details.
2. Connect the cameras electrically to the home network and configure the cameras. See **Camera Configuration**.
3. Integrate the cameras into the **OneHome** system and test proper operation. This step is outlined in **HomeLogic Configuration Details**.

THE BL-C111A AND BL-C131A SUPPORT THE FOLLOWING FEATURES:

Pan / Tilt: These cameras can be turned to see various locations.

Presets: These cameras support presets, allowing the user to store predefined locations such as a driveway or pool. This feature requires **OneHome** software version 4.0 or later.

Image Flip: These cameras can be mounted with its base up or down, and the image will appear normal.

Built-in Audio: Audio from the Panasonic cameras built-in microphone is supported in version 4.0 and later.

Motion Detection: These cameras support motion detection to trigger events in the **OneHome** system.

THE BL-C111A AND BL-C131A DO NOT SUPPORT THE FOLLOWING FEATURES:

Zoom: Cameras lacking optical zoom cannot be zoomed in HomeLogic.

CAMERA CONFIGURATION

The camera configuration is done with software provided by Panasonic, which must be run from a computer with Windows also connected to the same network as the camera.

The software program from Panasonic is **EasyConfig.exe**: the version we checked is shown at the top.

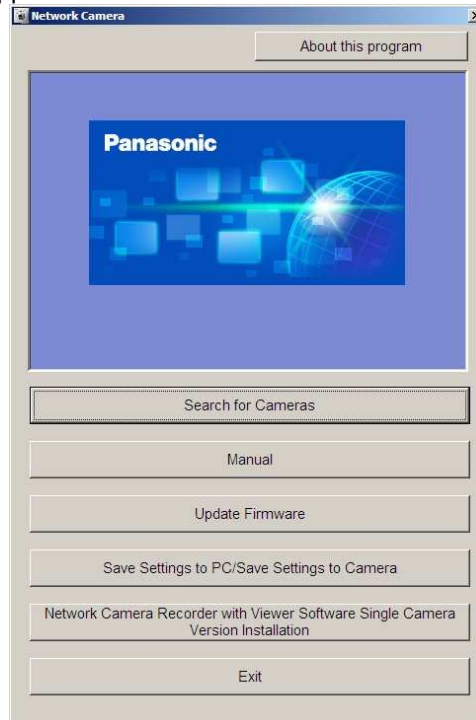
IMPORTANT NOTES

1. **Cameras must be configured one at a time:** If you are installing more than one camera, setup the first one completely before powering up subsequent cameras.
2. **Setup the camera within 20 minutes:** Initial settings must be made within 20 minutes of the camera being turned on. If the camera has been powered up for more than 20 minutes, cycle power to the camera before proceeding.

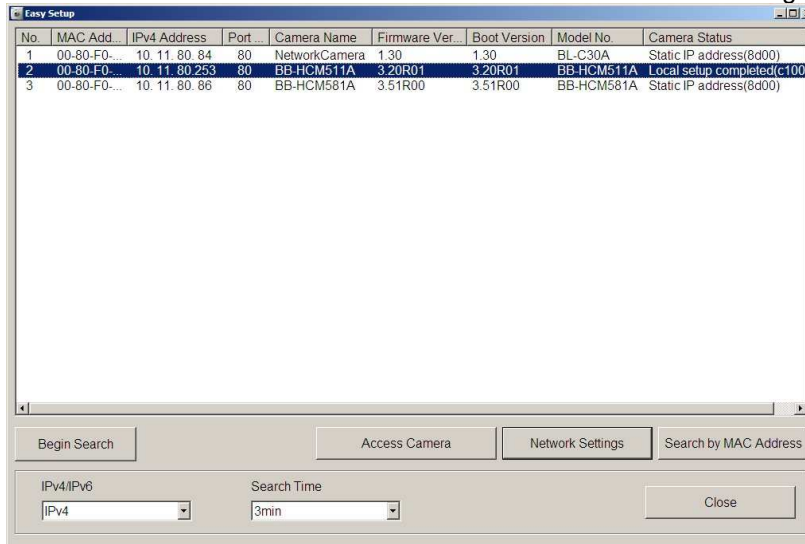
3. **DON'T LOSE THE CAMERA PASSWORD:** During setup you will create a user name and password, which are required to make any other changes in the future. If you lose the user name or password you will have to factory reset the camera and repeat this entire procedure.
4. **DEFAULT USER NAME / PASSWORD:** For Panasonic cameras, our default user name is **Administrator** and our default password is **password**.

STARTING THE PANASONIC CAMERA SOFTWARE

1. Insert the CD from the camera into your PC: It should autostart the Network Camera Setup software. If it does not, launch Setup.exe from the Panasonic CD.
2. The following Screen appears. Choose **Search for Cameras**.



3. Wait a moment to allow the software to find the camera: the following screen appears.



4. Select the desired camera, and then click the **Access Camera** button. After a short delay you will see a new browser window with the initial password screen below:



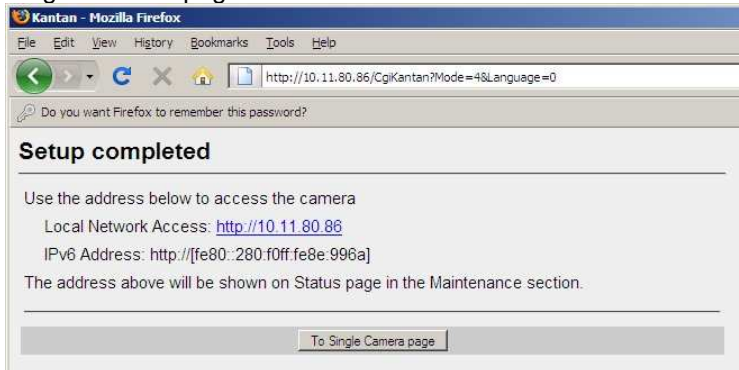
Initial Authentication Setting

Set the camera administrator's user name and password.

Initial Authentication Setting	
User Name (6 to 15 Characters)	<input type="text" value="Administrator"/>
Password (6 to 15 Characters)	<input type="password" value="password"/>
Retype Password	<input type="password" value="password"/>

Note: (1) Username and Password is case-sensitive.
(2) It is strongly recommended to change password regularly for security.

5. Type in your desired user name and password and click Save. By default we set the user name to **Administrator** and the password to **password**.
6. After a moment initial setup will complete. When prompted with the screen below, click the "To Single Camera page" button.



Kantan - Mozilla Firefox

File Edit View History Bookmarks Tools Help

http://10.11.80.86/CgiKantan?Mode=4&Language=0

Do you want Firefox to remember this password?

Setup completed

Use the address below to access the camera

Local Network Access: <http://10.11.80.86>

IPv6 Address: [http://\[fe80::280:f0ff:fe8e:996a\]](http://[fe80::280:f0ff:fe8e:996a])

The address above will be shown on Status page in the Maintenance section.

7. You will be prompted to enter your user name and password to login, as shown in the image below. Type in the user name and password you just set, and click **OK**.



Authentication Required

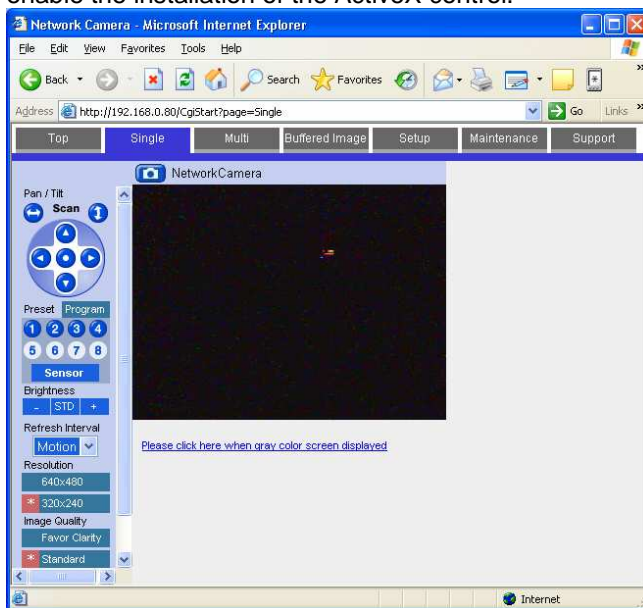
A username and password are being requested by <http://10.11.80.86>. The site says: "GeneralUser/Administrator"

User Name:

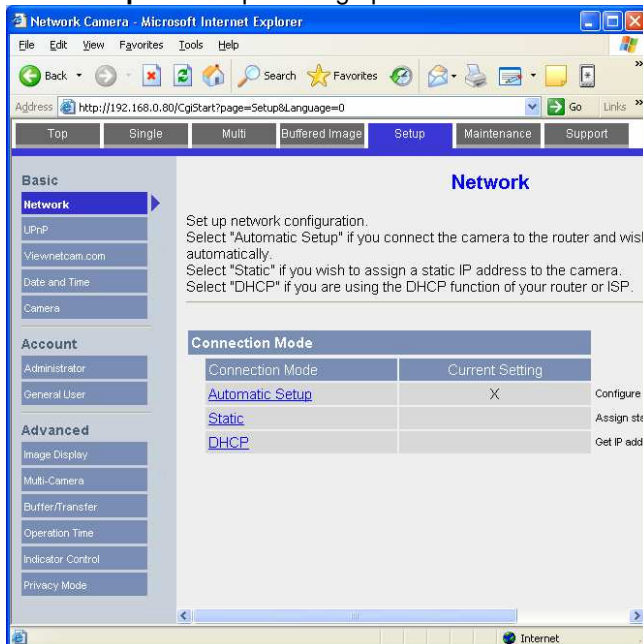
Password:

CAMERA SETTINGS

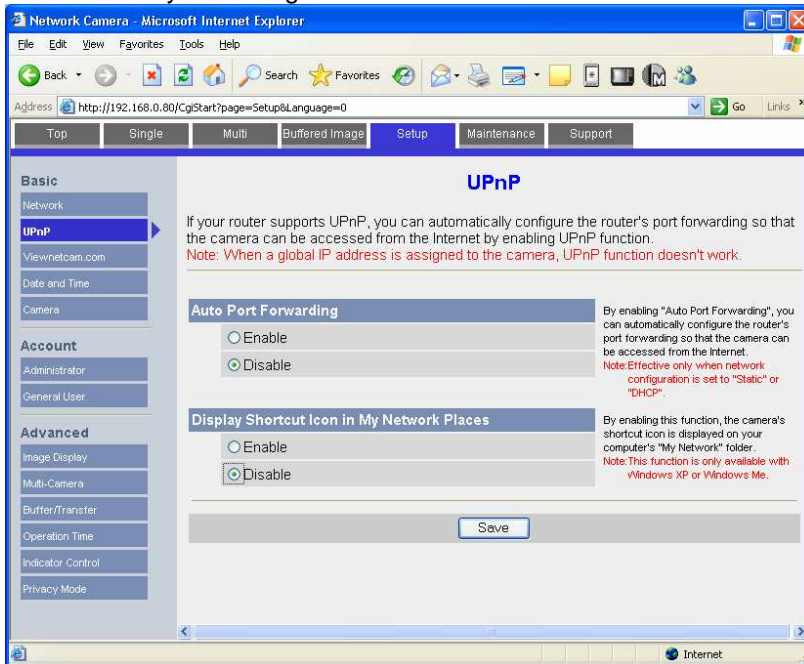
1. After typing in your user name and password, you will be shown the standard browser interface to the camera.
2. The system will attempt to install an ActiveX control to show the camera image in the browser window. This control is not needed for proper **OneHome** operation, but is needed if you wish to see the camera image on that computer. If any dialogs appear, close them or accept the ActiveX control as appropriate for your situation.
3. On Windows computers with popup blocking enabled, you will need to click the appropriate bar to enable the installation of the ActiveX control.



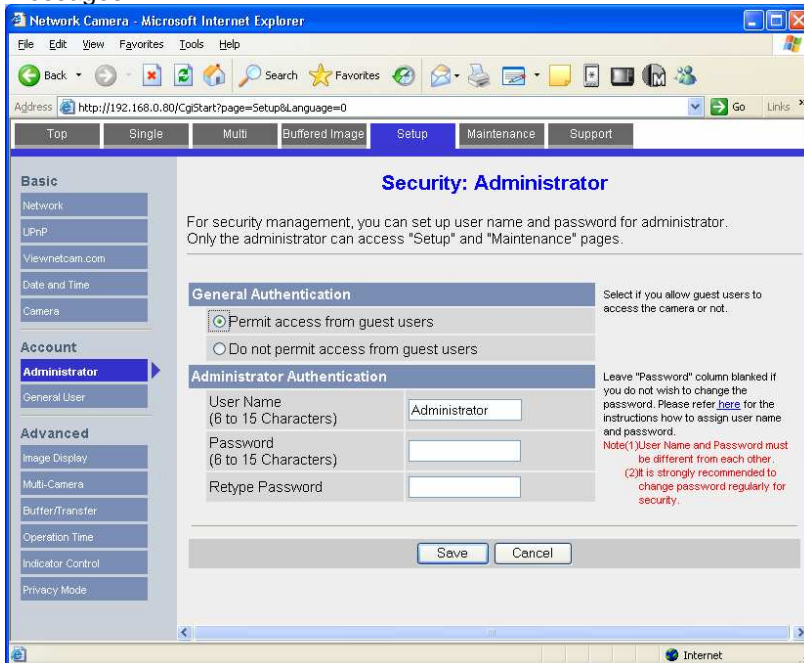
4. Click **Setup** at the top to bring up the screen shown below:



- Click **UPnP** on the left, then click **Disable** in the both parts of the screen, as shown below. Click **Save** to store your settings.



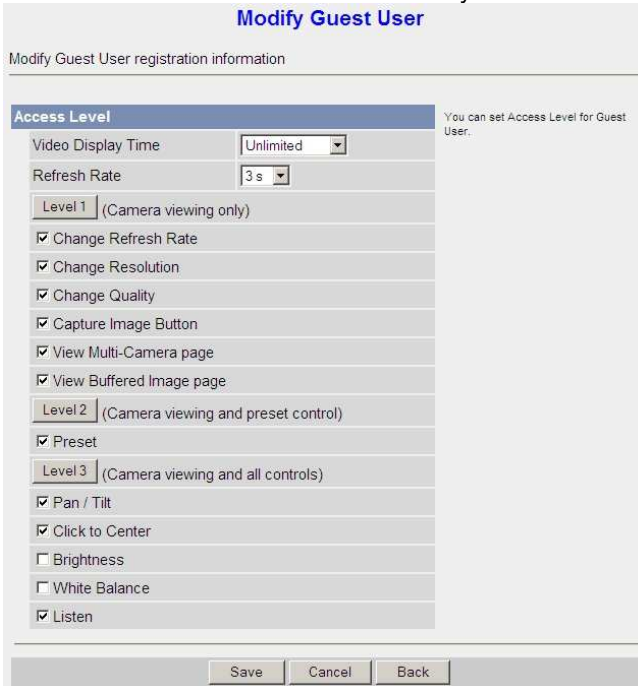
- Under Accounts to the left, click **Administrator** to bring up the screen below. Click **Permit access from guest users**, as shown below. Leave the **Password** boxes blank to prevent changing your password, then click **Save** to store your changes. Click **OK** on any warning messages.



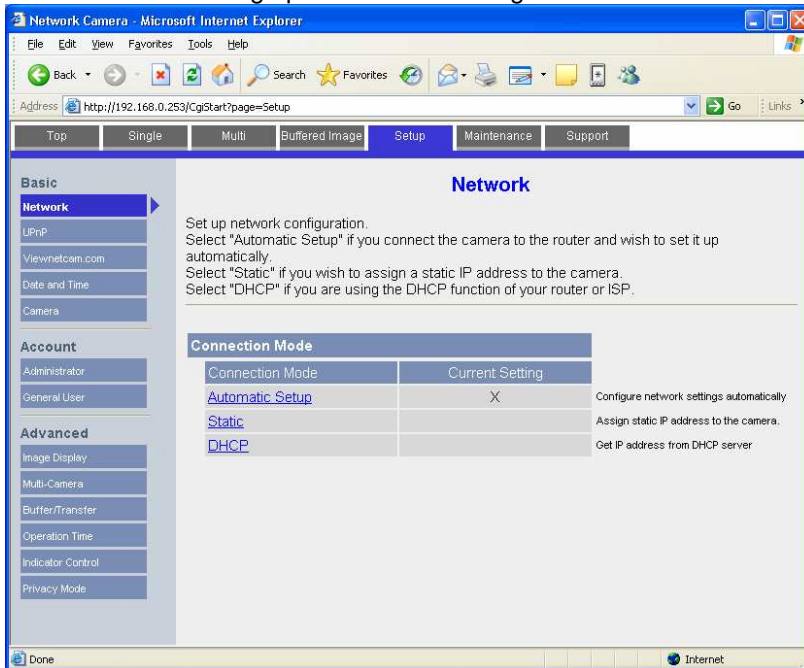
- Click on **General User** under Accounts. Click on **General User** and then click the **Modify** button.



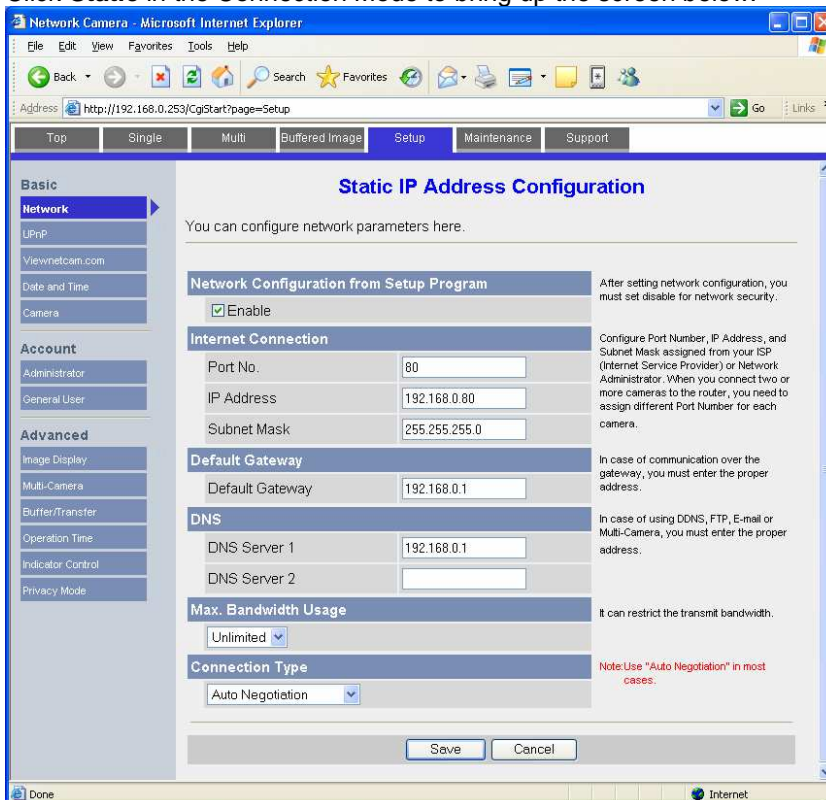
- Click the **Level 3** button to automatically check all boxes on the page. Save when finished.



9. Click **Network** to bring up the network settings screen shown below.



10. Click **Static** in the Connection Mode to bring up the screen below.



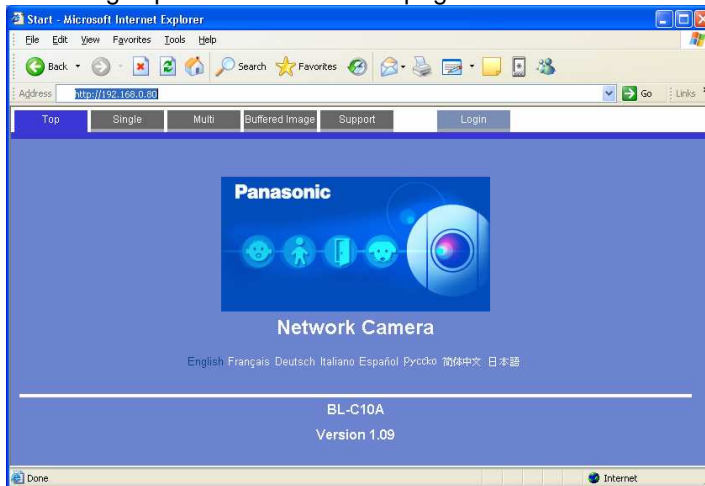
11. Set the IP address to the desired value: we suggest setting the first camera to 192.168.0.80, the second to 192.168.0.81, and so forth. Check the other settings so they match the screen above, then click **Save** to save the settings.

12. If prompted, click to **Restart** to restart the camera. Note that the camera is now at a different IP address, so the browser window won't show the camera.

13. Go to the address line in the browser, and put in the new IP address as shown below:



14. This brings up the camera's home page shown below:



15. The camera is now at the correct IP address with the correct settings.

16. Close the browser.

MOTION DETECTION FOR HOMELOGIC DVR CONFIGURATION

To use Panasonic IP Cameras with the HomeLogic DVR tab, enter the web configuration by typing the camera IP into the browser and logging on using your username and password. Click Setup, and then below Buffer/Transfer click **Motion Detection**. Threshold is the measure of the camera's sensitivity to change—a lower setting will cause it pick up smaller changes. Sensitivity affects the light sensitivity—a higher setting will result in more frequent detections of lighting changes. Typically, the **Threshold** should be set to the LOWEST setting and **Sensitivity** should be set to the HIGHEST.

The screenshot displays the HomeLogic DVR web interface. At the top, there are navigation tabs: Top, Single, Multi, Buffered Image, Setup, Internet, Maintenance, and Support. The 'Setup' tab is active. On the left side, there is a sidebar menu with categories: Basic, Account, Buffer/Transfer, and Advanced. Under 'Buffer/Transfer', 'Motion Detection' is selected and highlighted with a blue arrow. The main content area is titled 'Motion Detection' and contains the following configuration options:

- Enable when Trigger is the motion detection mode.** (This option is not explicitly shown as a checkbox in the image).
- Threshold:** A slider ranging from 'Low' to 'High'. The slider is currently positioned at the 'Low' end, with a green bar indicating the current setting.
- Sensitivity:** A slider ranging from 'Low sensitivity' to 'High sensitivity'. The slider is currently positioned at the 'High sensitivity' end, with a green bar indicating the current setting.

Below the sliders, there are 'Save' and 'Cancel' buttons.

Please see the **DVR Integration Note** for full details on setting up the DVR tab in HomeLogic.

HOMELOGIC CONFIGURATION DETAILS

The following table provides settings used in the HomeLogic Configurator. Please refer to the Configurator Reference Guide for more details. In the table below:

- “<User Defined>”, etc. Type in the desired name for the item.

ONEHOME SOFTWARE VERSION 4.0

Devices	Variable Name	Setting	Comments
Communication Device	N/A (See Note 1)	N/A (See Note 1)	
Video Cameras	Name	<User Defined>	
	Device Type	Panasonic BL-C111A	
	Location	<User Defined> (Not Required)	
	IP Address	<User Defined> (Default: 192.168.0.80) (See Note 2)	
	Port	80	Typically left at 80
	UserName	<User Defined> (Default: Administrator)	
	Password	<User Defined> (Default: password)	
	Low-Res Panning	<Select> (Default: <No>)	
	Flip Image 180	<Select> (Default: <No>)	Set to YES if camera is inverted
	Hide Resolution Control	<Select> (Default: <No>)	
	Hide Full Screen Control	<Select> (Default: <No>)	
	Default Resolution	<Select> (Default: <Auto>)	
	Goto Preset when Idle	<Select> (Default: <NONE>)	Camera will Pan/Tilt/Zoom as applicable to a certain preset when no streams active.
	Record Resolution	<Select> (Default: <Don't Change>)	Don't Change will default to last active resolution, or set a specific resolution for recording
	Record Tolerance	<Select> (Default: 0% (Keep All Frames))	Higher will discard frames with no motion to conserve disk space
	Motion Detect	<Select> (Default: Disabled)	Enable to trigger event maps when motion detected (DVR)
	Software Motion Trigger	<Select> (Default: 50%)	Lower is more sensitive.

Notes:

1. No Communication Device is needed: just add Video Cameras.
2. By default, set the first camera to 192.168.0.80, the second to 192.168.0.81, and so on.