

Manufacturer:	Panasonic
Model Number(s):	BB-HCM381A/ BB-HCE481A/ BB-HCM527A
OneHome Versions:	4.0.1310.0 or higher
Comments:	Network Camera (EasyConfig.exe version 3.10)
Document Revision Date:	5/19/2011

**NOTE: This document refers to Camera setup in software versions below 5.2 ONLY.
Please see the Rev 5.2 Integration Note for systems running 5.2 or greater.**

OVERVIEW AND SUPPORTED FEATURES

Installing the Panasonic camera can be broken down into the following steps:

1. Install cameras at desired locations, and pull power and Cat5 cabling as needed. Refer to the Panasonic documentation for mounting details.
2. Connect the cameras electrically to the home network and configure the cameras. See **Camera Configuration**.
3. Integrate the cameras into the **OneHome** system and test proper operation. This step is outlined in **HomeLogic Configuration Details**.

THESE CAMERAS SUPPORT THE FOLLOWING FEATURES:

Pan / Tilt: The camera can be turned to see various locations.

Zoom: The camera can zoom in/out.

Presets: These cameras support presets, allowing the user to store predefined locations such as a driveway or pool.

Built-in Audio: There is a jack for an external microphone. Audio from the Panasonic cameras is supported in version 4.0 and later.

Video Out: The camera includes an analog video output, which can be connected to an analog DVR to provide separate recording, or to a TV modulator to enable camera viewing on a television.

Image Flip: The camera can be mounted with its base up or down, and the image will appear normal.

Motion Detection: These cameras support motion detection to trigger events in the **OneHome** system.

Outdoor Dome: The BB-HCM381A/ BB-HCE481A cameras can be mounted outside in a protected dome. The dome part number is BBHCH280P, available from HomeLogic.

THESE CAMERAS DO NOT SUPPORT THE FOLLOWING FEATURES:

Input/Output: These cameras include an I/O connector for sensor inputs and alarm outputs. These are not supported by the OneHome system at this time.

2-Way Audio: These cameras include an Audio Out jack so a speaker can be connected for 2-way audio. Sending audio from a touch screen to the camera is not currently supported.

CAMERA CONFIGURATION

The camera configuration is done with software provided by Panasonic, which must be run from a computer with Windows also connected to the same network as the camera.

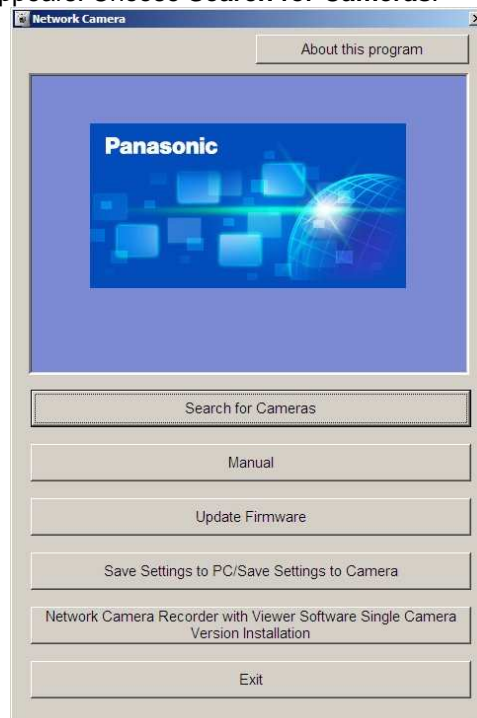
The software program from Panasonic is **EasyConfig.exe**: the version we checked is shown at the top.

IMPORTANT NOTES

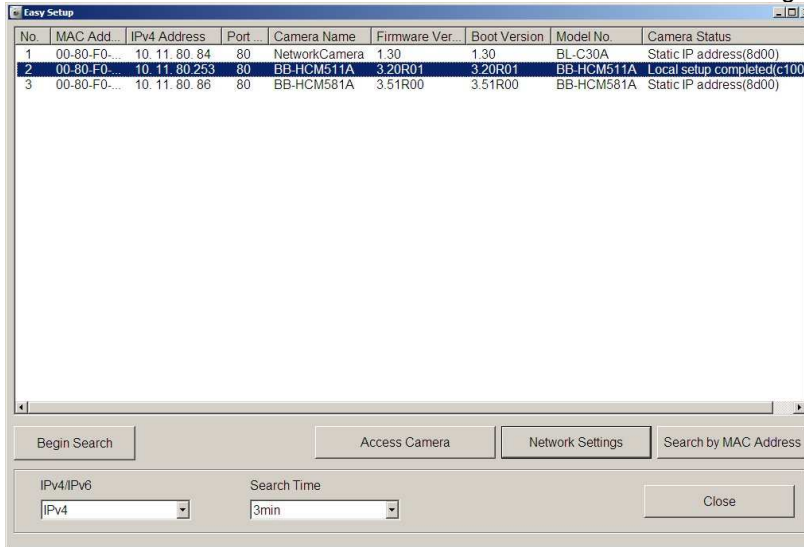
1. **Cameras must be configured one at a time:** If you are installing more than one camera, setup the first one completely before powering up subsequent cameras.
2. **Setup the camera within 20 minutes:** Initial settings must be made within 20 minutes of the camera being turned on. If the camera has been powered up for more than 20 minutes, cycle power to the camera before proceeding.
3. **DON'T LOSE THE CAMERA PASSWORD:** During setup you will create a user name and password, which are required to make any other changes in the future. If you lose the user name or password you will have to factory reset the camera and repeat this entire procedure.
4. **DEFAULT USER NAME / PASSWORD:** For Panasonic cameras, our default user name is **Administrator** and our default password is **password**. If the username and password are set to something other than **Administrator/password** then the camera view presets may not be reprogrammable.

STARTING THE PANASONIC CAMERA SOFTWARE

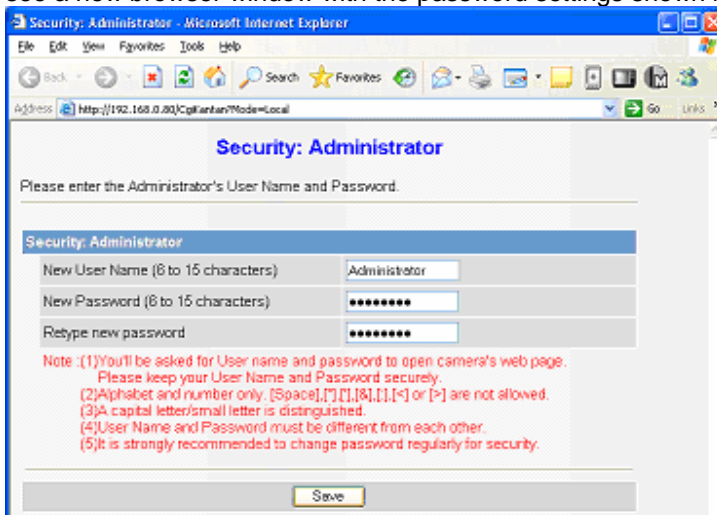
1. Insert the CD from the camera into your PC: It should autostart the Network Camera Setup software. If it does not, launch Setup.exe from the Panasonic CD.
2. The following Screen appears. Choose **Search for Cameras**.



- Wait a moment to allow the software to find the camera: the following screen appears.



- Select the desired camera, and then click the **Access Camera** button. After a short delay you will see a new browser window with the password settings shown below:



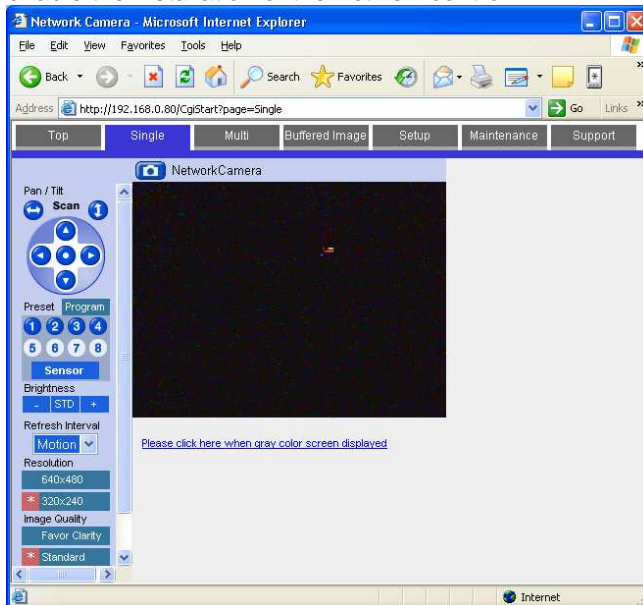
- Type in your desired user name and password and click Save. By default we set the user name to **Administrator** and the password to **password**.
- You will be prompted to enter your user name and password again, as shown in the image below. Type in the user name and password you just set, and click **OK**.



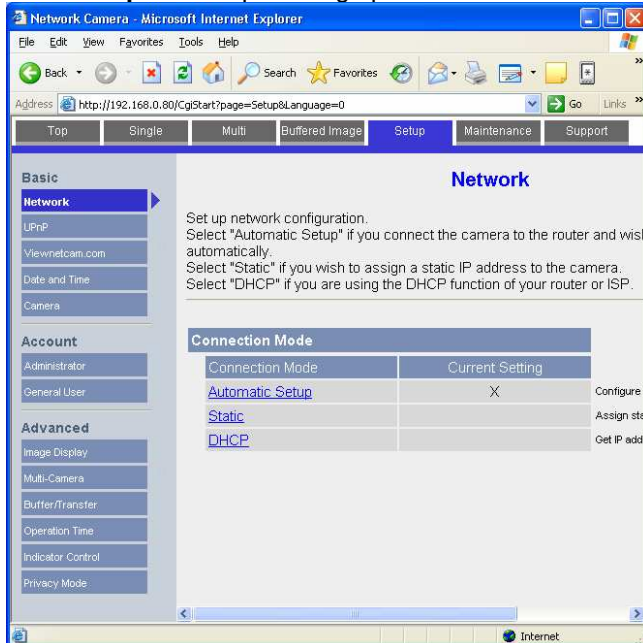
- After a short delay, you should see a new browser window, similar to that shown under Camera Settings below.

CAMERA SETTINGS

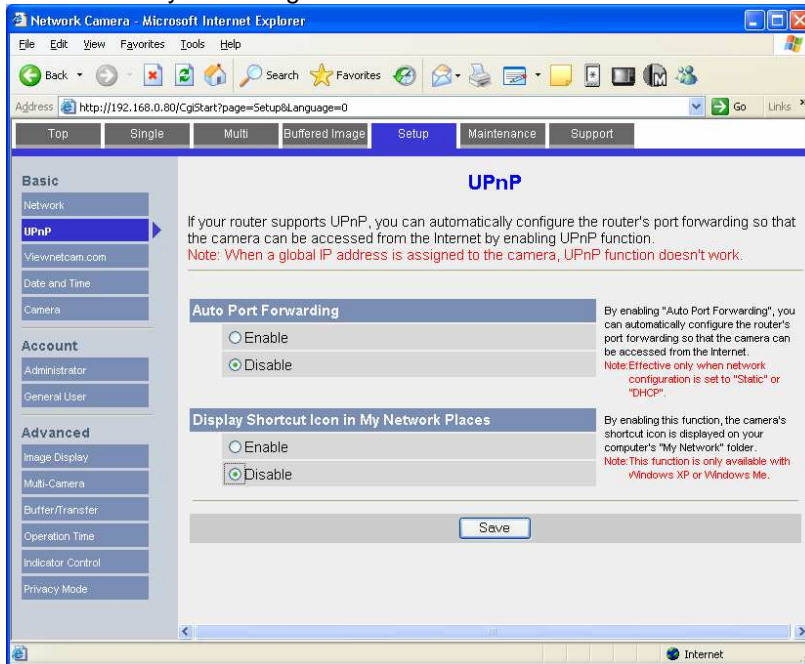
1. After typing in your user name and password, you will be shown the standard browser interface to the camera.
2. The system will attempt to install an ActiveX control to show the camera image in the browser window. This control is not needed for proper **OneHome** operation, but is needed if you wish to see the camera image on that computer. If any dialogs appear, close them or accept the ActiveX control as appropriate for your situation.
3. On Windows computers with popup blocking enabled, you will need to click the appropriate bar to enable the installation of the ActiveX control.



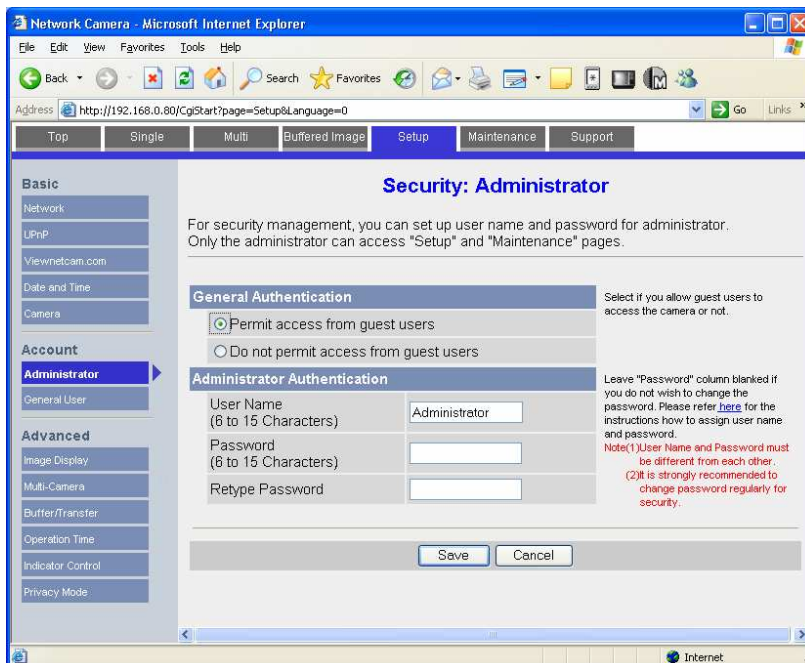
4. Click **Setup** at the top to bring up the screen shown below:



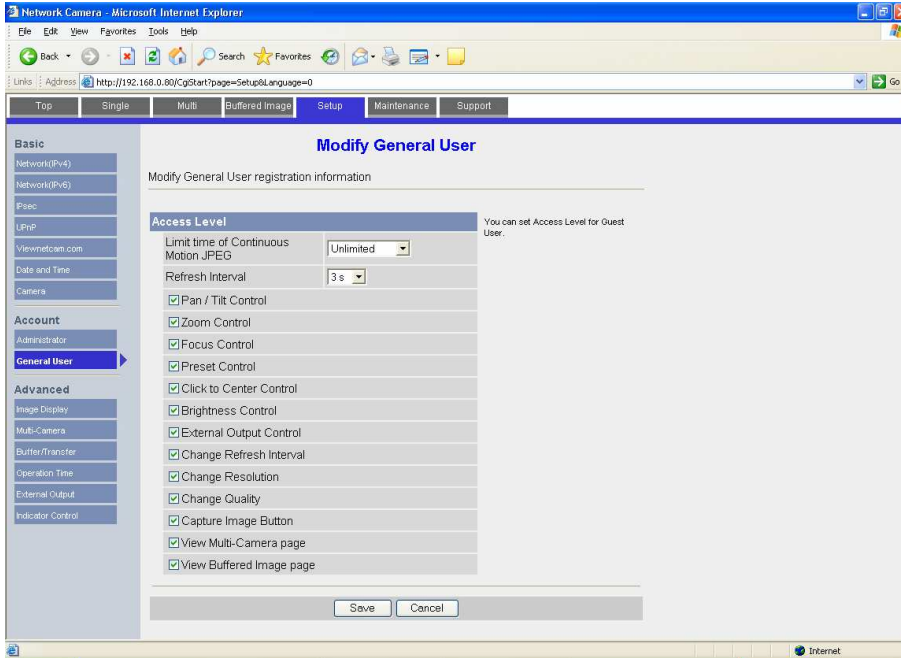
- Click **UPnP** on the left, then click **Disable** in the both parts of the screen, as shown below. Click **Save** to store your settings.



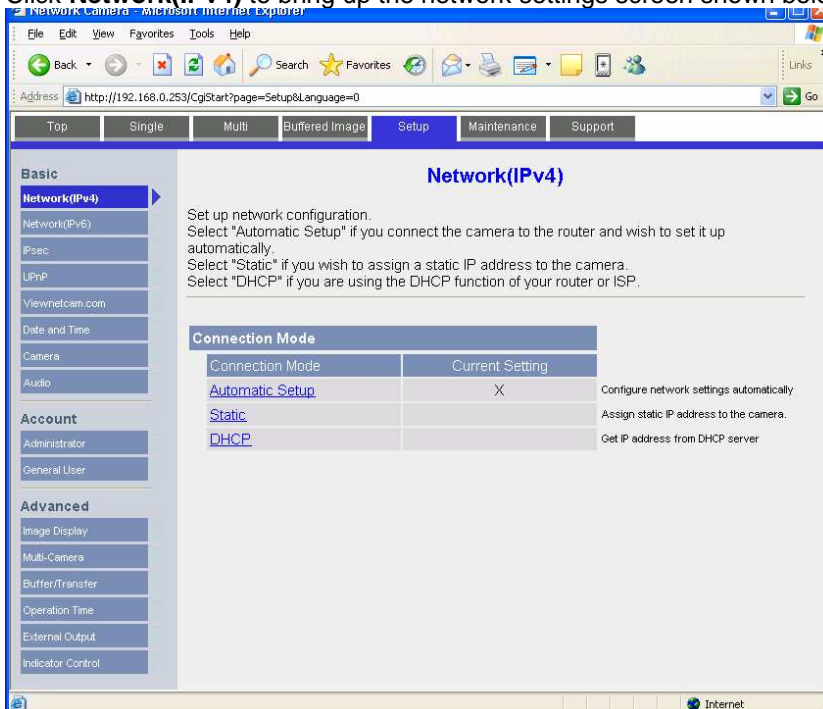
- Under Accounts to the left, click **Administrator** to bring up the screen below. Click **Permit access from guest users**, as shown below. Leave the **Password** boxes blank to prevent changing your password, then click **Save** to store your changes. Click **OK** on any warning messages.



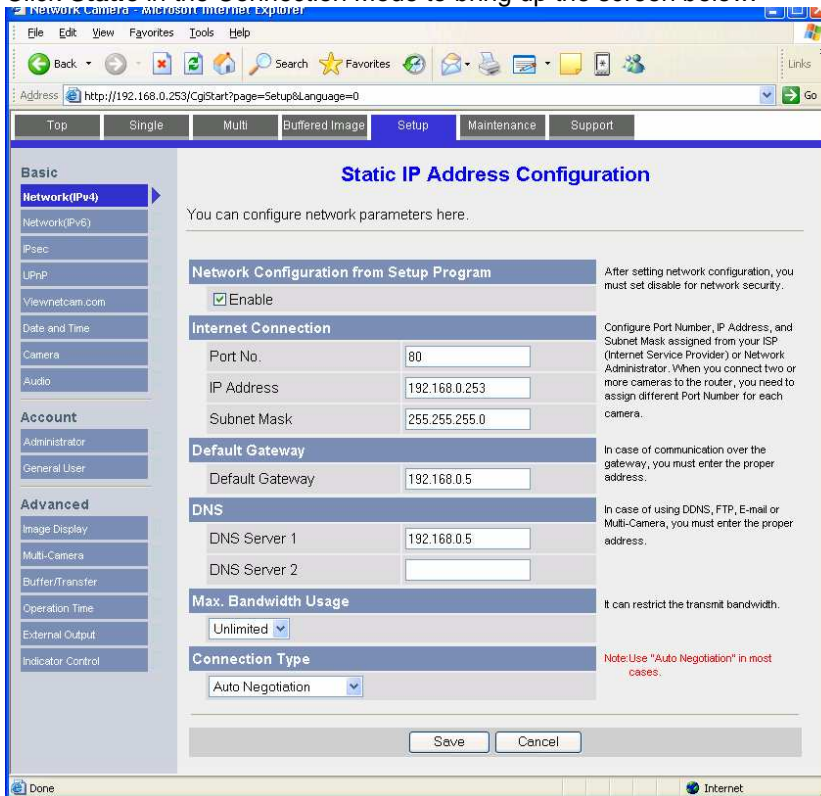
- Under Accounts to the left, click **General User**, select **Guest User** and click **Modify** to bring up the screen below. Click on all check boxes and set the **Limit time of Continuous Motion JPEG** to **Unlimited** as shown below. Click **Save** to store your changes.



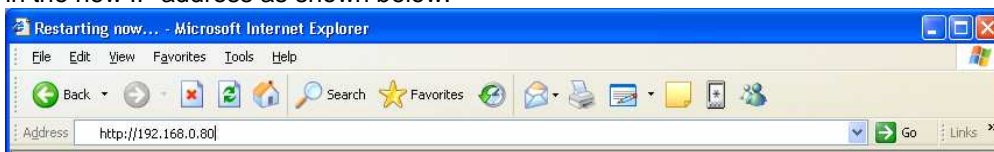
- Click **Network(IPv4)** to bring up the network settings screen shown below.



- Click **Static** in the Connection Mode to bring up the screen below.



- Set the IP address to the desired value: we suggest setting the first camera to 192.168.0.80, the second to 192.168.0.81, and so forth. Check the other settings so they match the screen above, then click **Save** to save the settings.
- If prompted, click to **Restart** to restart the camera, this may take a minute or so. When finished the camera's homepage will display.
- Note that the camera is now at a different IP address, so if after a few minutes the browser window does not show the camera homepage then go to the address line in the browser, and put in the new IP address as shown below:



- The camera is now at the correct IP address with the correct settings.
- Close the browser.

MOTION DETECTION FOR HOMELOGIC DVR CONFIGURATION

To use Panasonic IP Cameras with the HomeLogic DVR tab, enter the web configuration by typing the camera IP into the browser and logging on using your username and password. Click Setup, and then below Buffer/Transfer click **Motion Detection**. Threshold is the measure of the camera's sensitivity to change—a lower setting will cause it pick up smaller changes. Sensitivity affects the light sensitivity—a higher setting will result in more frequent detections of lighting changes.

Typically, the **Threshold** should be set to the LOWEST setting and **Sensitivity** should be set to the HIGHEST.

The screenshot shows a web interface for configuring motion detection. At the top, there are navigation tabs: Top, Single, Multi, Buffered Image, Setup (selected), Internet, Maintenance, and Support. On the left, a sidebar menu is organized into sections: Basic (Network (IPv4), Network (IPv6), UPnP, DynamicDNS, Date and Time, Camera, Audio, Video Streaming), Account (Administrator, General User), Buffer/Transfer (Trigger, Motion Detection (selected), Alarm Log), and Advanced (Image Display, Multi-Camera, Operation Time, External Output, Analog Video Output, Indicator Control). The main content area is titled "Motion Detection" and contains the following settings:

- Setup Motion Detection.**
- Motion Detection** (Section Header)
- Threshold:** A slider ranging from "Low" to "High". The slider is positioned at the far left (Low).
 - Enable when Trigger is the motion detection mode.
 - Threshold: Adjust the threshold. If the threshold is set low, this software sensitivity detects changes. (Default: Third blocks from the left)
- Sensitivity:** A slider ranging from "Low sensitivity" to "High sensitivity". The slider is positioned at the far right (High sensitivity).
 - Sensitivity: If you set sensitivity high, amplitude of motion detection bar gets jumpy. (Default: Center)
- Buttons: Save, Cancel

Please see the **DVR Integration Note** for full details on setting up the DVR tab in HomeLogic.

