



Camera Integration Note

Manufacturer:	Panasonic
Model Number(s):	IP Video Cameras (See models list below) <i>NOTE: This Integration Note details use of the Panasonic i-Pro models. See the Integration Note for Panasonic Standard Series driver for consumer model lines</i>
Minimum Core Module Version:	g! 6.1
Comments:	Panasonic IP Setting SW 4.24 CGI Command Protocol 1.33
Document Revision Date:	2/13/2013

IMPORTANT: This Integration note only applies to the new “Panasonic Pro Series” driver available in version 6.1 of g! software. If you are integrating consumer level products (not i-pro) please see the appropriate Integration Notes.

Panasonic i-pro models are only supported in 6.1 or newer release.

OVERVIEW AND SUPPORTED FEATURES

THE PANASONIC CAMERA DRIVER SUPPORTS THE FOLLOWING FEATURES:

Pan / Tilt / Zoom: Some Panasonic cameras can be turned to see various locations and zoom in and out. This feature is supported in the driver, and is configurable using a dropdown menu. Note: cameras that only have digital zoom may not support zoom through the g! viewer.

Presets: Some Panasonic cameras support presets, allowing the user to store predefined locations such as a driveway or pool. This feature is supported in the driver, and is configurable using a dropdown menu.

Motion Detection: Some Panasonic cameras support motion detection to trigger events in the g! system. This feature is supported in the driver, and is configurable using a dropdown menu.

Video Out: Some Panasonic cameras include an analog video output, which can be connected to an analog DVR to provide separate recording, or to a TV modulator to enable camera viewing on a television.

Image Flip: The camera can be mounted with its base up or down, and the image will appear normal. Simply set the “flip 180” option in the g! Configurator.

One-Way Audio: Some cameras support Listen function for audio. This is supported on applicable models.

THESE CAMERAS DO NOT SUPPORT THE FOLLOWING FEATURES:

Any feature not specifically noted as “supported” is not supported.

Input/Output: These cameras include an I/O connector for sensor inputs and alarm outputs. These are not supported by the g! system at this time.

Two-Way Audio: Two way audio (speaking from a touch screen and outputting from Camera) is not supported by the g! system at this time.

All Resolutions: Some models support Megapixel or Widescreen resolutions. This is not supported by g! at this time, and only the cameras lower resolutions will be usable in the Viewer. In addition, not all cameras support all resolutions (some cameras may only show “Med” and “High” options, for example).

ELAN Home Systems • 1690 Corporate Circle • Petaluma, CA 94954 USA

tech support: 800.622.3526 • main: 760.710.0990 • sales: 877.289.3526 • email: elan@elanhomesystems.com

©2013 ELAN Home Systems. All rights reserved. ELAN and g! are trademarks of ELAN Home Systems. All other trademarks are the property of their respective owners.

INSTALLATION OVERVIEW

Installing the Panasonic camera can be broken down into the following steps:

1. Install cameras at desired locations, and pull power and Cat5 cabling as needed. Refer to the Panasonic documentation for mounting details.
2. Connect the cameras electrically to the home network and configure the cameras. See **Camera Configuration**.
3. Integrate the cameras into the **g!** system and test proper operation. This step is outlined in **g! Configuration Details**.

CAMERA CONFIGURATION

The camera configuration is done with software provided by Panasonic, which must be run from a computer with Windows also connected to the same network as the camera.

The software program from Panasonic is **Pro IP Setting Software**: the version we checked is shown at the top.

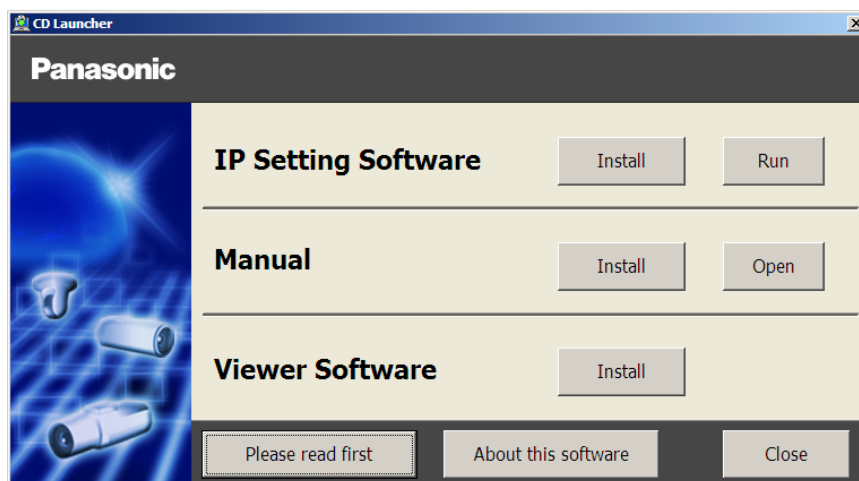
IMPORTANT NOTES

1. **Cameras must be configured one at a time:** If you are installing more than one camera, setup the first one completely before powering up subsequent cameras.
2. **Setup the camera within 20 minutes:** Initial settings must be made within 20 minutes of the camera being turned on. If the camera has been powered up for more than 20 minutes, cycle power to the camera before proceeding.
3. **DON'T LOSE THE CAMERA PASSWORD:** During setup you will create a user name and password, which are required to make any other changes in the future. If you lose the user name or password you will have to factory reset the camera and repeat this entire procedure.
4. **DEFAULT USER NAME / PASSWORD:** For Panasonic Pro cameras, the default user name is **admin** and default password is **12345**.

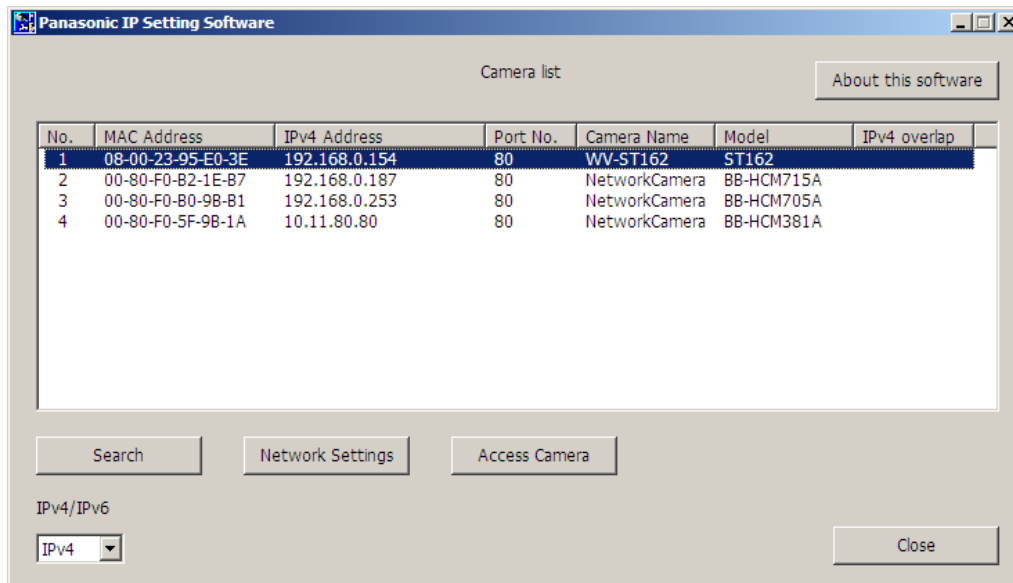
STARTING THE PANASONIC CAMERA SOFTWARE

Note: The directions below may vary somewhat between models and may not be an exact match. In general, look for options/screens similar those depicted below.

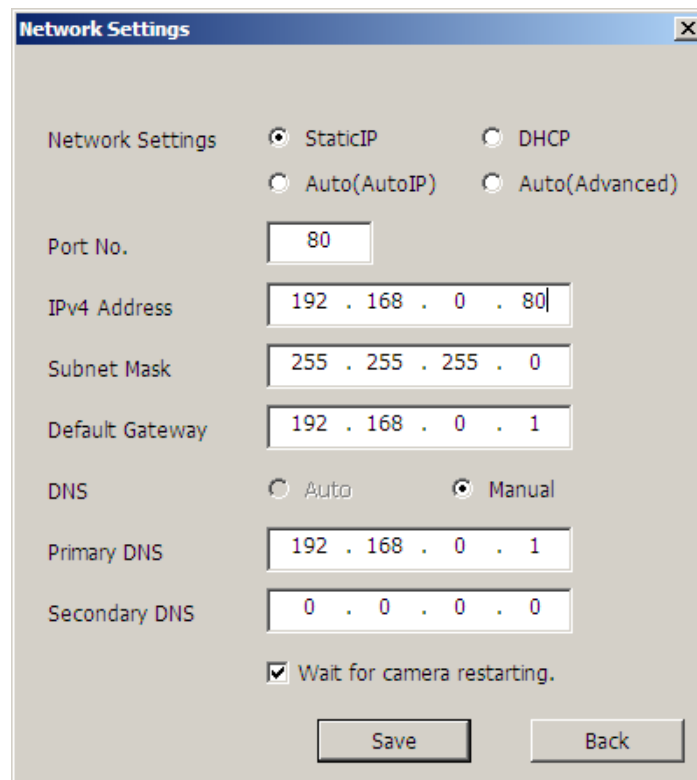
1. Insert the CD from the camera into your PC: It should autostart the Network Camera Setup software. If it does not, launch CDLauncher.exe from the Panasonic CD.
2. The following Screen appears. Choose **Run for IP Setting Software**.



3. Wait a moment to allow the software to find the camera: the following screen appears.



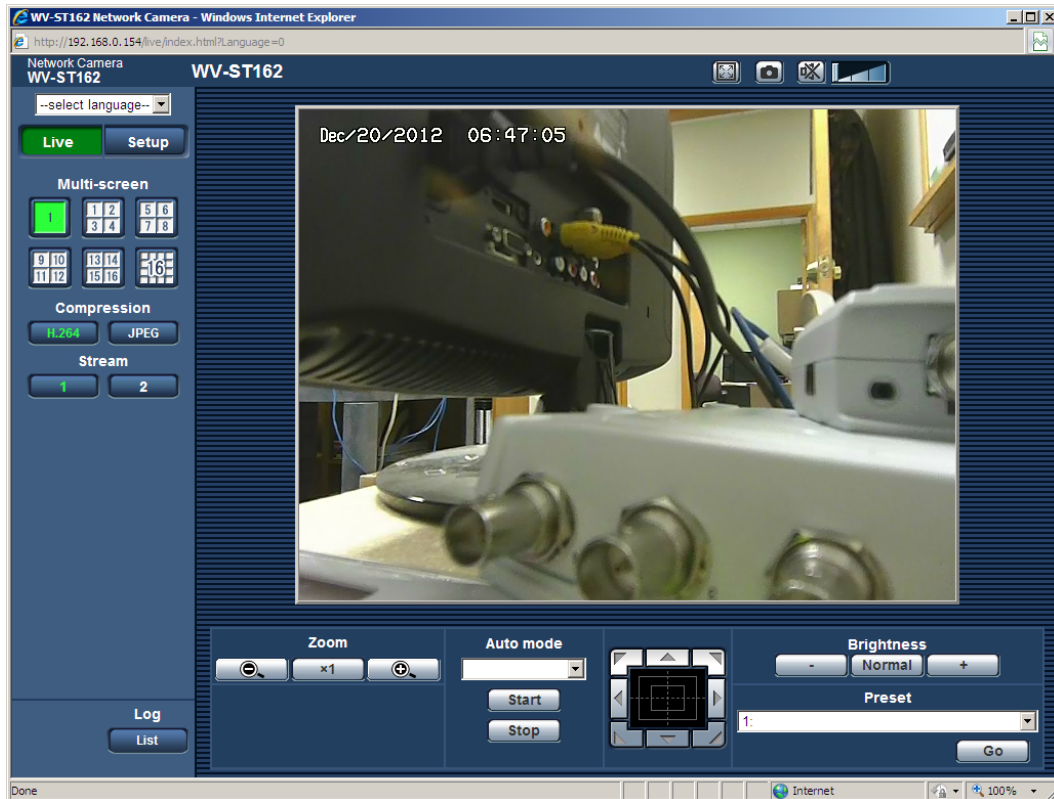
4. Select the desired camera, and then click the Network Settings Button. Assign the desired IP address. Elan recommends setting the first camera to 192.168.0.80, the second to 192.168.0.81, and so on. The camera will reboot when you click OK.



5. The camera is now at the correct static IP address for your network.

CAMERA SETTINGS

1. After the camera reboots, select the camera from the list and click the **Access Camera** button. After a short delay you will see a new browser window which may prompt you to run/install some add-on's (ActiveX) before fully loading. (Internet Explorer is recommended) Once all add-on's are running, a screen similar to below will appear:



2. Click the Setup button on the upper Left. You may be prompted for a password: by default use the user name to **admin** and the password **12345**.



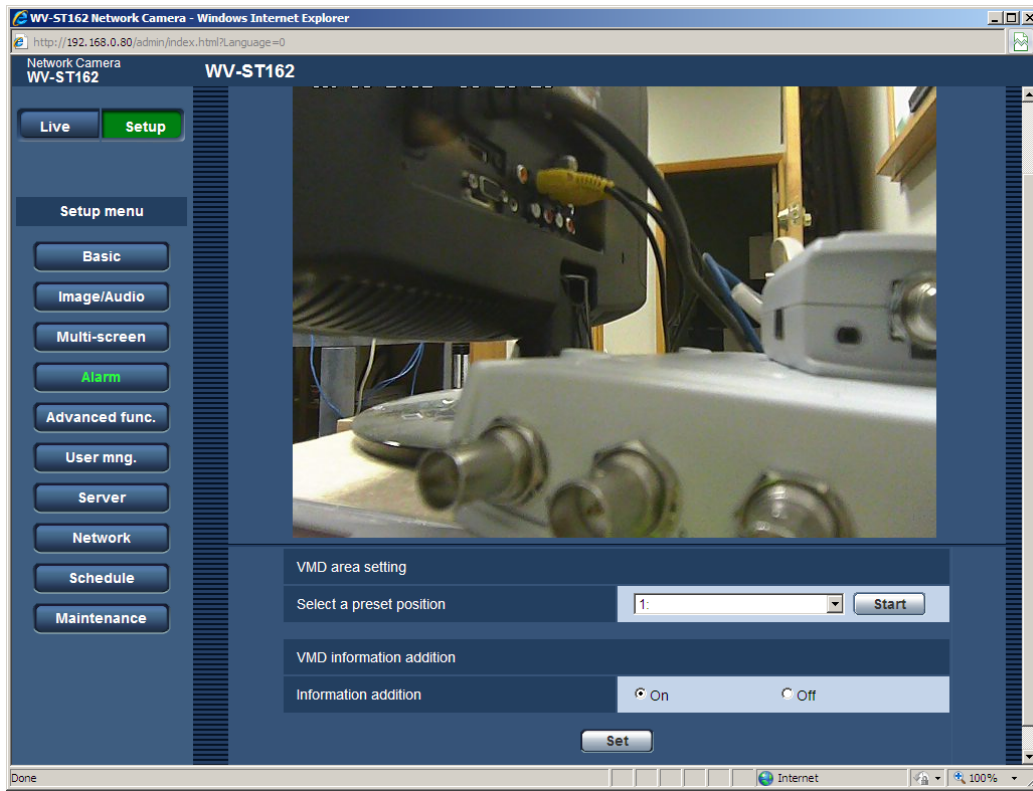
- After a moment the Basic menu page will appear. Configure the desired time zone and language information on this page and then click the “Set” button to save settings.

The screenshot shows the 'Basic' configuration page for the WV-ST162 Network Camera. The left sidebar contains a 'Setup menu' with buttons for Basic, Image/Audio, Multi-screen, Alarm, Advanced func., User mng., Server, Network, Schedule, and Maintenance. The 'Basic' tab is selected, showing fields for Camera title, Date/time, Time display format, Date/time display format, Summer time, NTP/Time zone, Start time & date, End time & date, Camera title on screen, Camera title on screen(0-9, A-Z), OSD Position, Brightness status display, Indicator, Alarm status update mode, and Alarm status reception port. The 'Set' button is at the bottom right of the configuration area.

- To enable Audio, go to the Image/Audio section and click the Audio tab.
- Enable the Audio Transmission/Reception to Mic Input and ensure G.726 is checked, then click the “Set” button to save settings.

The screenshot shows the 'Audio' configuration page for the WV-ST162 Network Camera. The left sidebar is the same as the previous screenshot. The 'Audio' tab is selected, showing fields for Audio transmission/reception, Audio encoding format, Audio bit rate, Mic input volume, Mic input interval, Audio output volume, Audio output interval, Audio output port, Permission level of audio trans./recep., and Muting while panning/tilting. The 'Set' button is at the bottom right of the configuration area.

6. **For Motion Detection:** Click the **Alarm** section and then choose the **VMD Area** tab. Set the **VMD Information Addition** to **ON** and then click **Set** to save settings.



Please see the **DVR Integration Note** for full details on setting up the DVR tab in **g!**

g! CONFIGURATION DETAILS

The following table provides settings used in the **g!** Configurator when connecting to a camera. Please refer to the *Configurator Reference Guide* for more details.

In the table below:

- “<Select>” Select the appropriate item from the list (or drop-down) in the Configurator.
- “<User Defined>”, etc. Type in the desired name for the item.
- “<Auto Detect>”, etc. The system will auto detect this variable.

Devices	Variable Name	Setting	Comments
Communication Device	N/A (See Note 1)	N/A (See Note 1)	
Video Cameras/Sources	Name	<User Defined>	
	Device Type	Panasonic Pro Series	
	IP Address	<User Defined> (Default: 192.168.0.80) (See Note 2)	
	Port	80	Typically left at 80. Cameras do not need to be set to different listening ports for g!
	UserName	<User Defined> (Default: admin)	
	Password	<User Defined> (Default: 12345)	
<<<Wait a moment after adding the IP address and saving, and the Panasonic i-pro cameras should autodetect most settings. Below options provided for reference only. >>>			
<<DVR Options should still be selected as usual.>>>			
See Note 3	Enable DVR	<Select> (Default: <No>)	Set to YES to enable the built in DVR function. See the DVR Integration Note for full details.
	Low-Res Panning	<Select> (Default: <No>)	Set to YES to have camera set the resolution to LOW prior to any camera Panning.
	Has Pan/Tilt	<Select> (Default: <No>)	Set to YES if Camera has Pan/Tilt functionality.
	Has Zoom	<Select> (Default: <No>)	Set to YES if Camera has Optical Zoom.
	Has Presets	<Select> (Default: <No>)	Set to YES if the camera has position/zoom presets.
	Has Audio	<Select> (Default: <No>)	Set to YES if the camera has Audio.
	Has Motion Detect	<Select> (Default: <No>)	Set to YES if the camera supports Motion Detection.
	Flip Image 180	<Select> (Default: <No>)	Set to YES if camera is inverted.
	Hide Resolution Control	<Select> (Default: <No>)	Set to YES to hide the Resolution control buttons from the Viewer.
	Hide Full Screen Control	<Select> (Default: <No>)	Set to YES to hide the Full Screen button from the Viewer.
	Default Resolution	<Select> (Default: <Auto>)	Set to desired Default Resolution: the camera will always load at this setting when viewed.
	Goto Preset When Idle	<Select> (Default: <None>)	Choose the desired preset to have the camera return to when it is not open in any Viewer.
	Record Resolution	<Select> (Default: <Don't Change>)	Don't Change will default to last active resolution, or set a specific resolution for recording.
	Record Mode	<Select> (Default: Auto (Medium Sensitivity))	Select the desired sensitivity level for the Auto motion mode, or choose fixed value.
	Record Threshold	<Select> (Default: Disabled)	Record Mode must be set to "Fixed Threshold" to enable. Select the desired motion %
	Event-Map Motion Trigger	<Select> (Default: Disabled)	Set to enable Motion Detection as a Event Map trigger. This is not required for typical DVR function, and is only needed if you wish to use the Motion % as a Event trigger.
	Trigger Value	<Select> (Default: 50%)	Set the level for the Event Map motion detection trigger. Lower is more sensitive.
Notes:			
1. No Communication Device is needed: just add Video Cameras.			
2. By default, set the first camera to 192.168.0.80, the second to 192.168.0.81, and so on.			
3. Not all options may be available, as some options only open up based on the selection of other options.			

PANASONIC CAMERA MODELS:

WV-NP1000/NP244/NS202/NF284/NW484/NS202A/NS954/NW964/NF302/NP304

WJ-NT304/NT314

WV-NP502/NW502

WJ-GXE500, DG-GXE500

WV-SP306/SP305/SP302, WV-SF336/SF335/SF332,

DG-SP305/SP304V/SF335/SF334,

WV-SP105/SP102/SF346/SF342,

WV-SC385/SW395/SC384/SW355/SW352,

DG-SP102/SC385/SW395/SW355

BB-SC384 and BB-HCM7xx

WV-SW396/WV-SC386

DG-SW396/DG-SC386

DG-SP509/SW559/

WV-SP509/SP508/SW559/SW558

WV-SW17x/ST16x,BB-SW17x/ST16x

BL-VT16x/VP10x

DG-SW316L/SW316/SW314

WV-SW316L/SW316/SW314

COMMON MISTAKES:

Incorrect Camera Settings:

- Confirm settings in the Panasonic camera for Username and Password match, or you will see no video feed.