

Add Music or Pictures to a Controller

Overview:

This document explains how to access the share folders on controllers with internal Hard Drives for use with Music, Pictures, or DVR. Controllers with internal hard drives include all versions of the HomeBrick, the HC-12 and HC-8.

Note: The MultiBrick, HC-6, and HC-4 lack an internal hard drive and are not applicable to this document.

Required Tools:

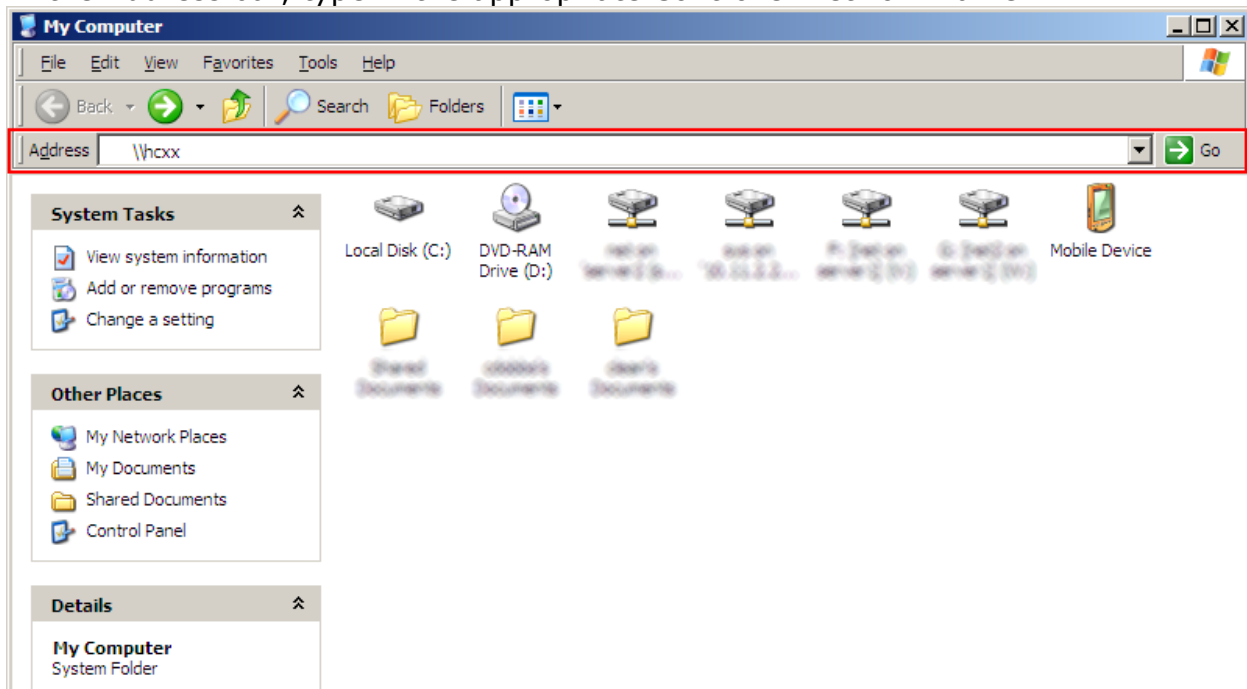
You will need the following:

1. Windows Computer connected to same LAN as Controller

NOTE: This document is written as a guide for users with Windows OS computers, and does not go into detail for any additional steps that may be required to access LAN shares from Mac, Linux or other OS.

Accessing HC/HomeBrick Network Shares:

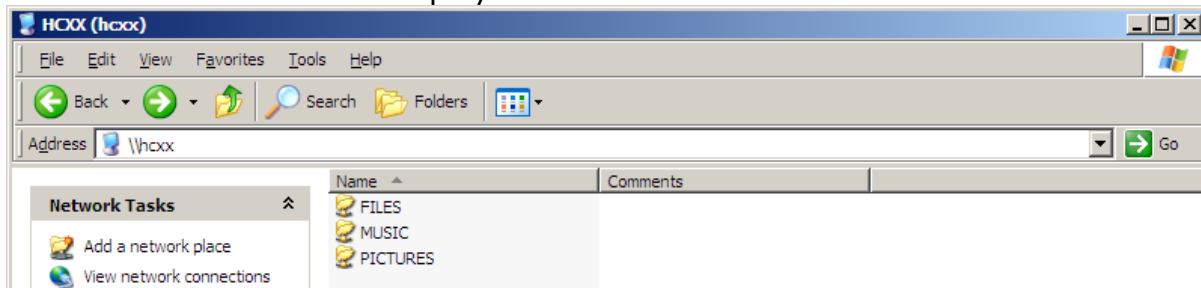
1. Open My Computer (Win7/Vista: Computer) to browse system folders.
2. In the Address bar, type in the appropriate Controller network name*:



| | |
|--|---------------------------------------|
| HC Controller | \\hcx |
| HomeBrick Controller | \\hlgateway |
| Note: You may also type in the local IP, for example: \\192.168.0.2 | |

*The network share may also be mapped as a network drive to make it easier for an end user. See the Mapping Network Drives for details.

3. A list of share folders are displayed for that controller similar to below:



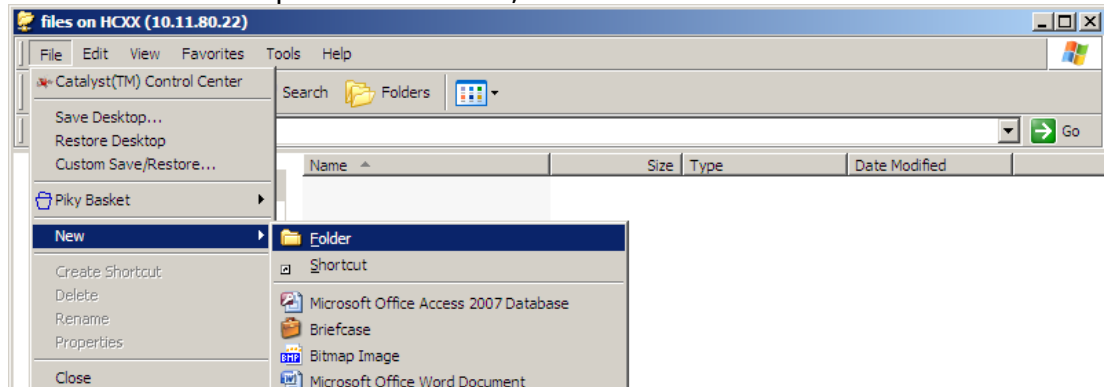
4. Use the network shares:

a. **To add Music or Pictures:**

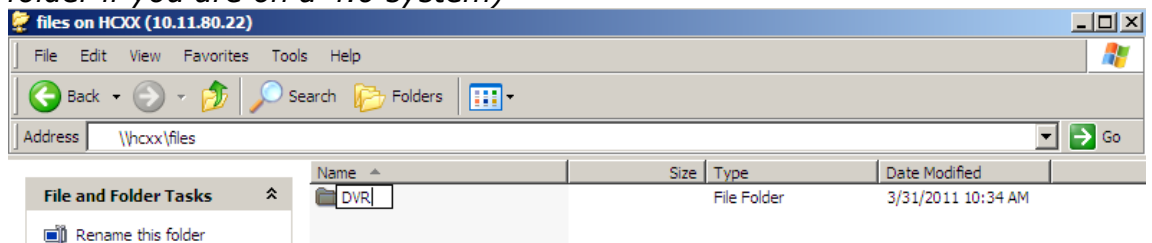
- i. Drag & drop or copy & paste desired content into the appropriate folder on the Controller just as you would move any other files in Windows.
- ii. Note that files will not appear in the libraries until they have been scanned. See **Scanning Music** or **Scanning Pictures** below for more detail.

b. **To Create a Folder for DVR** (see the Local Paths reference for more info on using this path in Configurator):

- i. Enter the FILES subfolder by double-clicking on it. *Generally there is no content in this folder by default.*
- ii. Click File at the top of the window, then choose New > Folder.



iii. Name the folder "DVR". (You may repeat this step to create a second "saves" folder if you are on a 4.0 system)

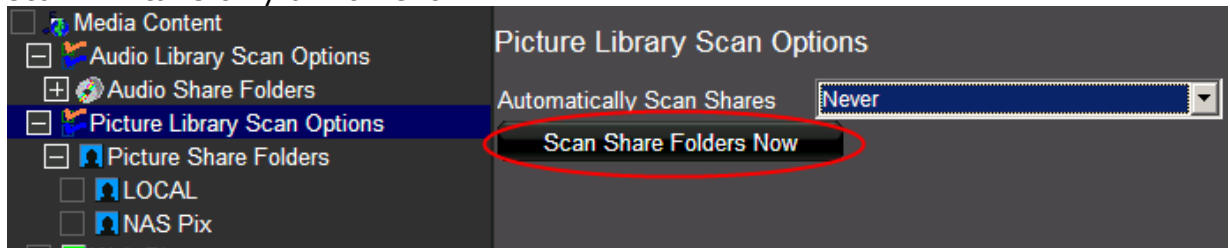


Scanning Pictures:

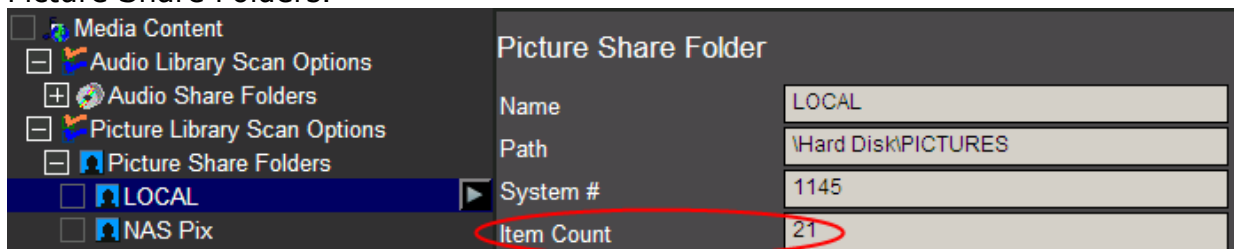
After adding JPG content to a picture share, you must re-scan the share for the photos to appear on the screensaver or in the Photos tab. There are two ways to do this:

- **One time scan:**

1. To initiate a scan on the pictures share, enter Configurator.
2. Click on the Content Tab, and then click Picture Library Scan Options.
3. Click the Scan Share Folders Now button to initiate the scan. Typically a picture scan will take only a moment.

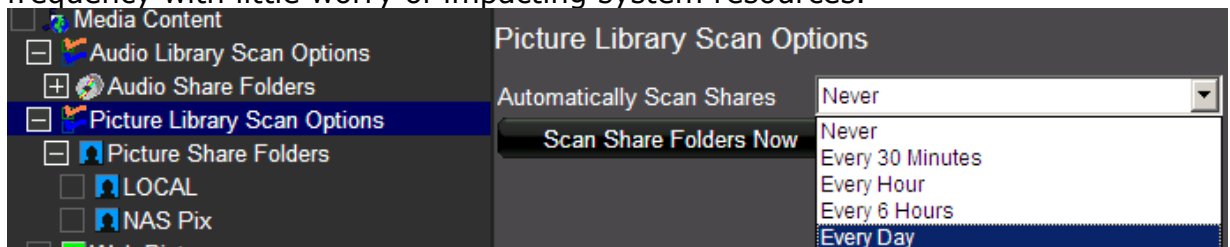


4. You may verify the Item Count for your share has changed by clicking on your Picture Share Folders.



- **Regular Scan:** Configurator may be set to scan the Pictures share(s) at a regular interval. This allows a customer without Configurator access to upload pictures on their own, and have the pictures show up in the system within a period of time after they were added.

1. To configure a regular scan on the pictures share, enter Configurator.
2. Click on the Content Tab, and then click Picture Library Scan Options.
3. Click the Automatically Scan Shares drop down box and choose your desired scan interval. A picture scan is generally not very intensive and can be set to a high frequency with little worry of impacting system resources.

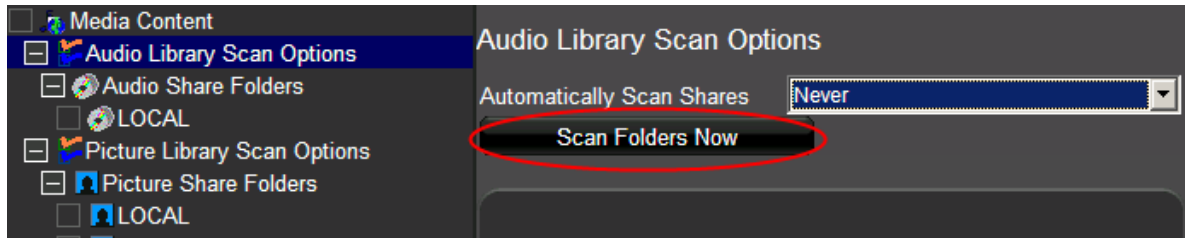


Scanning Music:

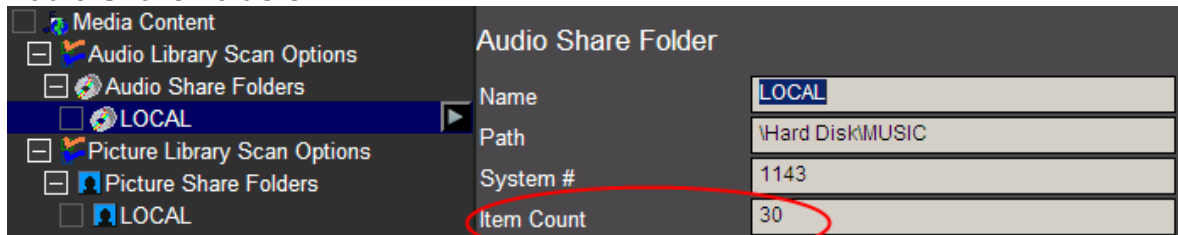
After adding media to the Audio Shares, the share folder must be scanned to add the new files to the Music Library. There are three ways to do this:

- **One time scan:**

1. To initiate a scan on the Audio Share, enter Configurator.
2. Click on the Content Tab, and then click Audio Library Scan Options.
3. Click the Scan Share Folders Now button to initiate the scan. Note that a Music scan may take some time. You may observe its progress in the window below the Scan... button.

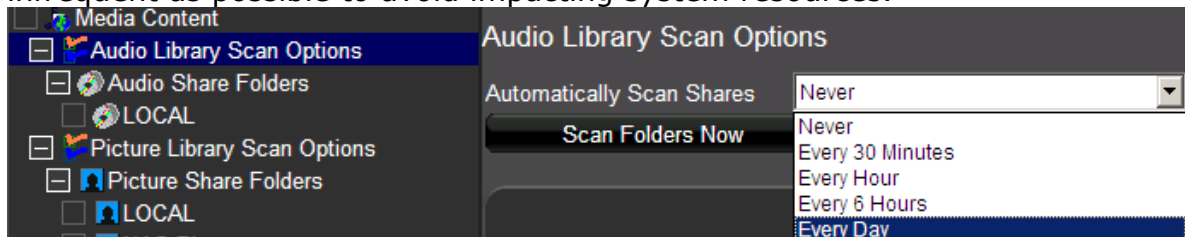


4. You may verify the Item Count for your share has changed by clicking on your Audio Share Folders.



- **Regular Scan:** Configurator may be set to scan the Audio share(s) at a regular interval. This allows a customer without Configurator access to upload Audio on their own, and have the Audio show up in the system within a period of time after they were added.

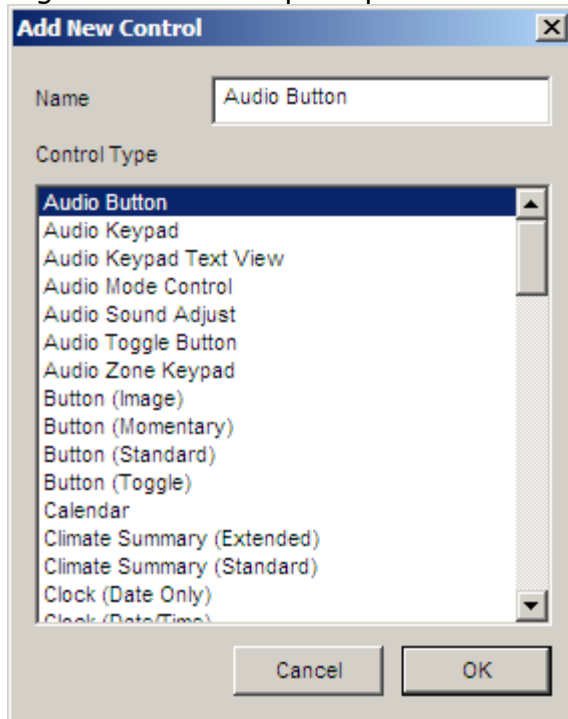
1. To configure a regular scan on the Audio Share, enter Configurator.
2. Click on the Content Tab, and then click Audio Library Scan Options.
3. Click the Automatically Scan Shares drop down box and choose your desired scan interval. Note an audio scan can be somewhat intensive and should be set as infrequent as possible to avoid impacting system resources.



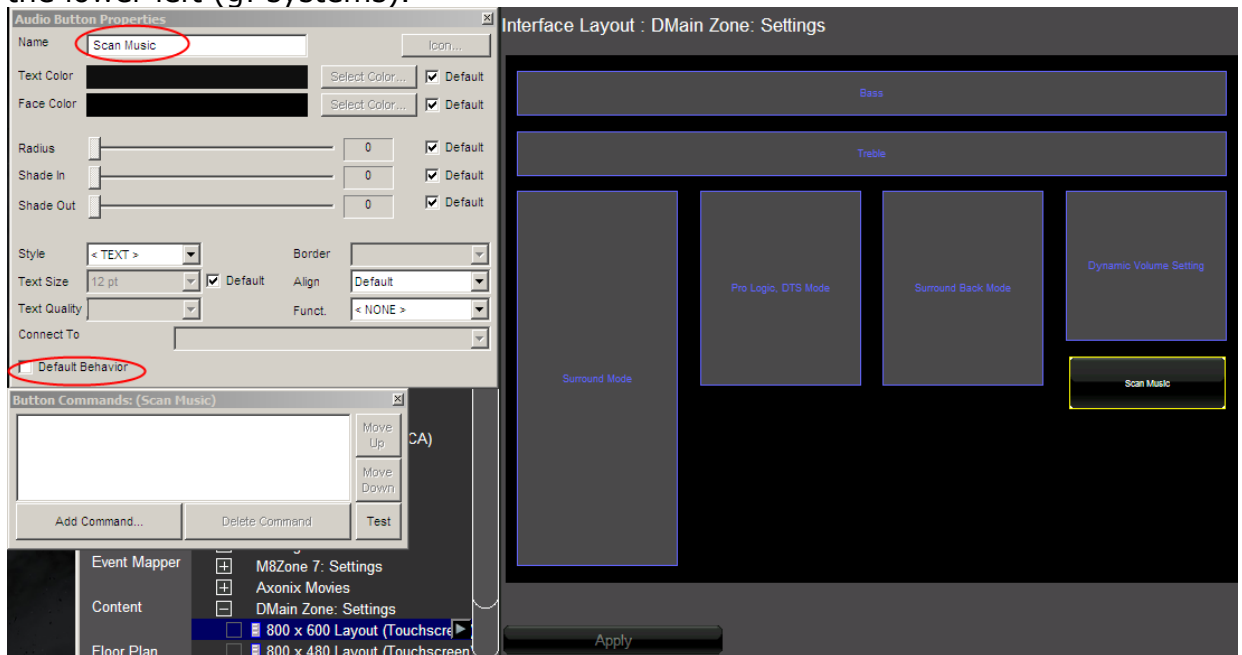
- **On Demand Scan from Viewer/Event Map:** A button may be placed on a custom interface that initiates a scan on all media. This same function can easily be added from any Event Map in a similar fashion to the process described below.

1. In this example, an Audio Button will be added to an existing Settings interface for an AVR. These steps should be easy to adapt to other situations as needed.

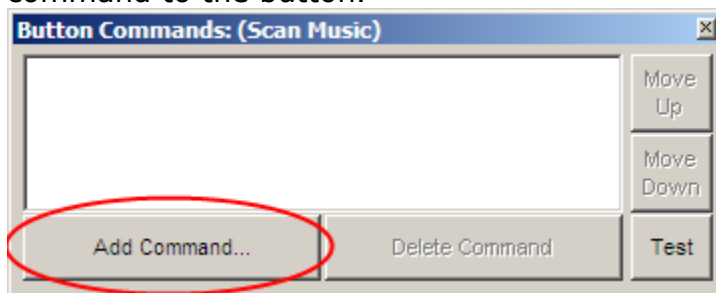
2. On the Media Tab in Configurator, open the Interface Layout for the desired resolution on the interface desired.
3. Right Click on an open space and Add New Control: Audio Button.



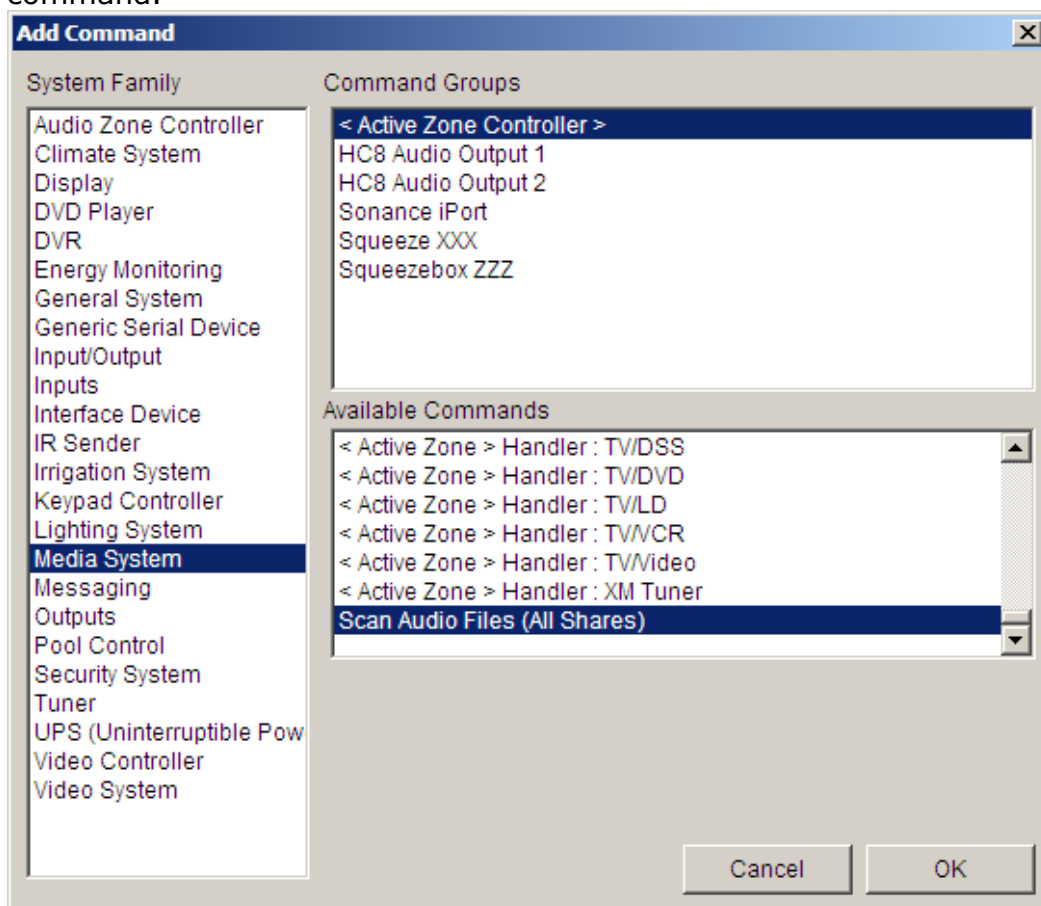
4. In the Audio Button Properties window, rename the button to something appropriate, such as "Scan Music" and uncheck the "Default Behavior" check box on the lower left (g! systems).



5. The Button Commands window appears. Click the Add Command... button to add a command to the button.



6. Add the command from System Family: Media System, Command Groups: <Active Zone Controller>, and scroll down to select the Scan Audio Files (All Shares) command.

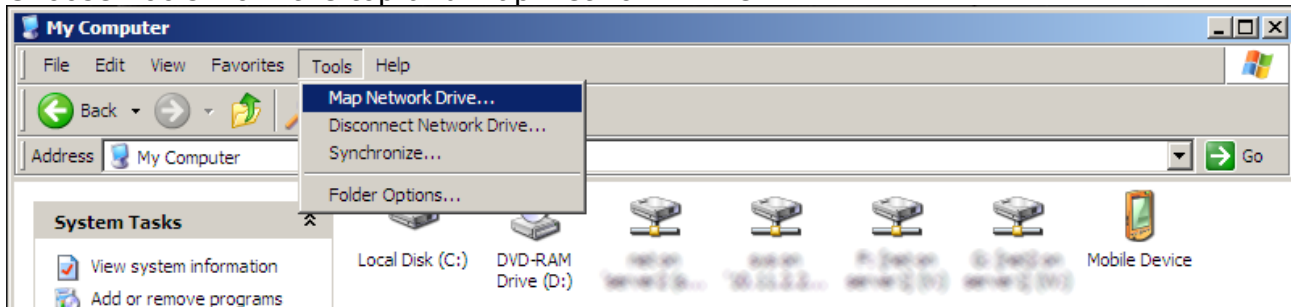


7. The scan can now be initiated from the Viewer. Note an audio scan can be somewhat intensive and may take some time to complete on large databases, and will take longer if lots of new media is present. It is important to set expectations with your client that pressing this button will start a scan, and it may take some time for new music to show up in the Viewer.

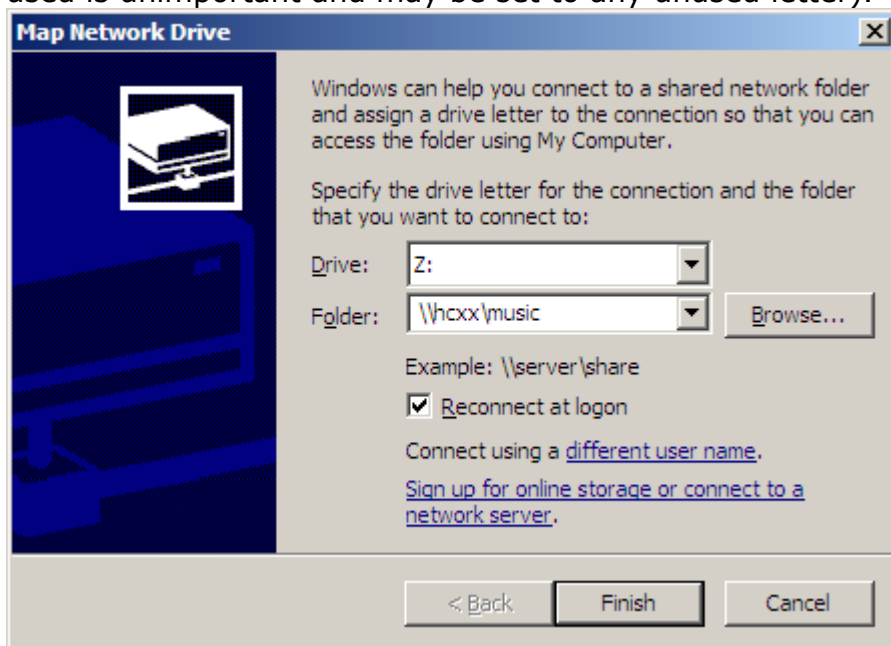
Mapping a Network Drive

It may be easiest for a customer if the network path is mapped as a drive on their Windows computer, allowing them easy access to the Controller as though it were another disk on their system.

1. Open My Computer (Win7/Vista: Computer) to browse system folders.
2. Choose Tools from the top and Map Network Drive...

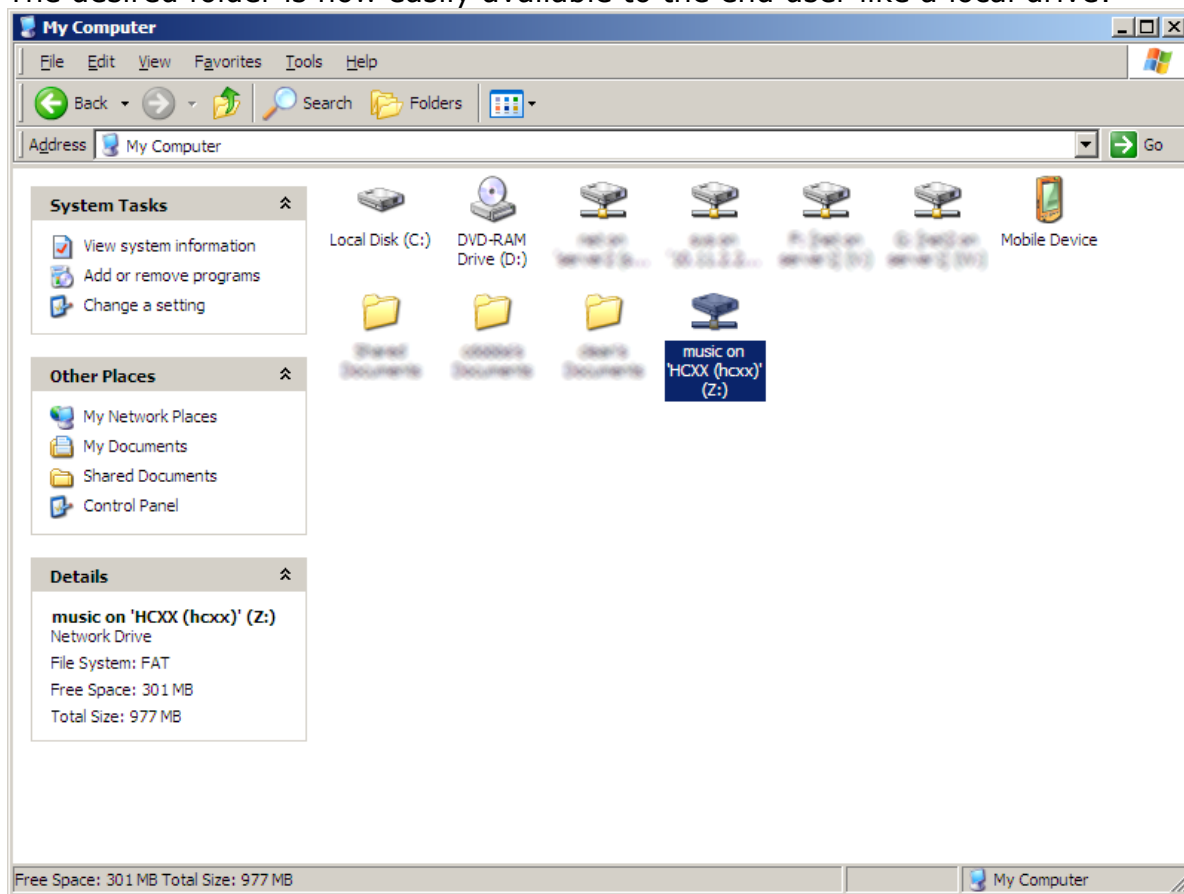


3. Configure settings for the desired controller type and folder as shown (the drive letter used is unimportant and may be set to any unused letter).



| Network "Folder" Path Reference | Music | Pictures |
|---------------------------------|---|---|
| HC Controller | \\hcxx\\music | \\hcxx\\pictures |
| HomeBrick | \\hlgateway\\music | \\hlgateway\\pictures |

4. The desired folder is now easily available to the end user like a local drive:



Default Paths in Configurator for Local Media (Reference)

| Audio Shares | HomeBrick | HC Controller |
|----------------|--------------|----------------------|
| | C:\MUSIC | \Hard Disk\Music |
| Picture Shares | HomeBrick | HC Controller |
| | C:\PICTURES | \Hard Disk\Pictures |
| DVR | HomeBrick | HC Controller |
| <i>example</i> | C:\Files\DVR | \Hard Disk\Files\DVR |

Use the above file structure when configuring your local shares in Configurator for the appropriate controller. Note that typically these paths are present by default (with the exception of DVR), and are presented as reference in case they are deleted.

Typically paths in Configurator are not case sensitive.